

# PRODUCT AND SOLUTIONS GUIDE

## Quick Reference Guide: Copper Sub Saharan Africa

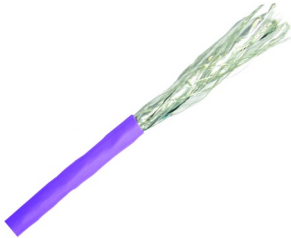
Q1 2024



**molex**

<b>PowerCat 6A Shielded</b>	<b>3</b>
<b>PowerCat 6A Unshielded</b>	<b>8</b>
<b>PowerCat 6</b>	<b>10</b>
<b>PowerCat 5e</b>	<b>15</b>
<b>Wall Plates and Fascias</b>	<b>18</b>
<b>Tools</b>	<b>19</b>

# PowerCat 6A Shielded

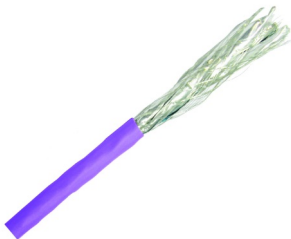


## PowerCat 7A S/FTP Cable

Category 7A S/FTP Cable (each pair has individual foil screens plus a common shield for the cable made of tinned copper braid) is a complementary product for shielded PowerCat 6 and PowerCat 6A (with limitations) systems. The cable is suitable for horizontal cabling in high speed data transmission networks as well as vertical cabling for data. Small outer diameter, high flexibility and superior electrical performance are key features of the product. This cable is part of our PowerCat 6A System which is suitable for the most demanding PoE Applications.

- Transmission performance C7A in a 1-1000MHz range as per IEC 61156-5
- Provides significant margins for NEXT, PowerSum NEXT, PowerSum ELFEXT
- Alien NEXT is significantly reduced so it can be used for 10G Application
- Small outer diameter, high flexibility
- Delivered in 500m lengths on wooden, fully recyclable reels
- PoE Compliant with IEC 802.3bt from Type 1 to Type 4 as part of a Molex C6A System

Order No.	SAP No.	Description
CAA-00360	Consult Molex	Category 7A S/FTP Cable, 4 Pairs 1.2GHz LS0H, Dca-s1a,d1,a1 Violet - 500m reel



## Category 7 S/FTP Cable

Category 7 S/FTP Cable (each pair has individual shield plus a common shield for the cable made of tinned copper braid) is a complementary product for shielded PowerCat 6 and PowerCat 6A (with limitations) systems. The cable is suitable for horizontal cabling in high speed data transmission networks as well as vertical cabling for data. Small outer diameter, high flexibility and superior electrical performance are key features of the product. This cable is part of our PowerCat 6A System which is suitable for the most demanding PoE Applications.

- Transmission performance C7 in a 1-600MHz range as per IEC 61156-5
- Provides significant margins for NEXT, PowerSum NEXT, PowerSum ELFEXT
- Alien NEXT is significantly reduced so it can be used for 10G Application
- Small outer diameter, high flexibility
- 1000m lengths on wooden, fully recyclable reels
- Compliant with EN 50575:2014+A1:2016 EU Reaction to Fire Performance criteria
- PoE Compliant with IEC 802.3bt from Type 1 to Type 4 as part of a Molex C6A System

Order No.	SAP No.	Description
CAA-00358	183530002	Category 7 S/FTP LS0H Cable Dca-s1a,d1,a1 Violet - 1000m



## PowerCat 6A U/FTP Cable

Enhanced performance, individually screened 4-pair U/FTP LS0H cable. Supports high speed data network applications such as 10-Gigabit Ethernet (10GBASE-T). Minimizes alien crosstalk, provides excellent signal isolation and provides superior electromagnetic interference (EMI) protection. This cable is part of our PowerCat 6A System which is suitable for the most demanding PoE applications.

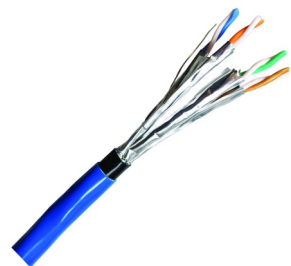
- Supports high speed data network applications such as 10-Gigabit Ethernet (10GBASE-T)
- Enhanced performance individually foilscreened 4 pair U/FTP LS0H cable
- Minimizes alien crosstalk, provides excellent signal isolation and provides superior electromagnetic interference (EMI) protection
- Resistant to alien crosstalk
- Color coded for ease of termination
- 500m Reel
- PoE compliant with IEC 802.3bt from Type 1 to Type 4 as part of a Molex C6A System

Order No.	SAP No.	Description
CAA-00413-VL	183020040	PowerCat 6A U/FTP LS0H Cable B2ca-s1a,d1,a1 Violet 500m
CAA-0322L-VI	183020033	PowerCat 6A U/FTP LS0H Cable, Dca-s1,d2,a1, Violet - 500m

## PowerCat 6A U/FTP C6A Outside Cable

The Molex CAA-00418 is an outside plant Gel-Filled Category 6A 4 Pair U/FTP cable. A HDPE compound insulates the cores while a PE (UV) sheath provides protection against moisture and UV. An additional nylon outer jacket provides protection against abrasion and termites. The rugged construction of this cable makes it ideal for outdoor/ underground installations.

- Category 6A compliant
- UV resistant
- Suitable for outdoor/underground Installations
- Water resistant gel-filled design



Order No.	SAP No.	Description
CAA-00418	183020048	Cat6A U/FTP Gel Filled Outdoor PE Cable Nylon Fca Blue 305m

## PowerCat 6A Shielded



### PowerCat 6A Solid Cable Assemblies

Molex PowerCat 6A shielded solid cable assemblies are ideal for consolidation point cabling or as equipment cords within a PowerCat 6A shielded end-to-end solution. The PowerCat 6A shielded solution is specifically designed to support secure-high speed 10GBASE-T networks and is backward compatible with 10/100/1000BASE-T networks. Cable assemblies are made from high quality shielded four pair 23 AWG solid copper wire and are pre-terminated with RJ45 plugs and feature anti-snag slip on boots.

- 4 pair 23 AWG solid copper wire
- Pre-terminated with RJ45 shielded plugs
- Anti-snag slip on boots
- ANSI/TIA-568B wiring
- LSOH sheath
- 10G Performance when installed as a complete PowerCat 6A Shielded System

Order No.	SAP No.	Description
PCD-07054-VL	183160844	PowerCat 6A Shielded Solid Cable Assembly, U/FTP, LSOH, Violet, 4m
PCD-07055-VL	183160845	PowerCat 6A Shielded Solid Cable Assembly, U/FTP, LSOH, Violet, 6m
PCD-07056-VL	183160846	PowerCat 6A Shielded Solid Cable Assembly, U/FTP, LSOH, Violet, 8m
PCD-07057-VL	183160847	PowerCat 6A Shielded Solid Cable Assembly, LSOH, U/FTP, Violet, 10m
PCD-08000-0P	183270077	PowerCat 6A Shielded Solid Cable Assembly, LSOH, U/FTP, Violet, 15m
PCD-07058-VL	183160848	PowerCat 6A Shielded Solid Cable Assembly, LSOH, U/FTP, Violet, 20m
PCD-08001-0P	183270078	PowerCat 6A Shielded Solid Cable Assembly, LSOH, U/FTP, Violet, 25m
PCD-07059-VL	183160849	PowerCat 6A Shielded Solid Cable Assembly, LSOH, U/FTP, Violet, 30m
PCD-08002-0P	183270079	PowerCat 6A Shielded Solid Cable Assembly, LSOH, U/FTP, Violet, 35m
PCD-07060-VL	183160850	PowerCat 6A Shielded Solid Cable Assembly, LSOH, U/FTP, Violet, 40m
PCD-08003-0P	183270080	PowerCat 6A Shielded Solid Cable Assembly, LSOH, U/FTP, Violet, 50m
PCD-08004-0P	183270081	PowerCat 6A Shielded Solid Cable Assembly, LSOH, U/FTP, Violet, 60m

### PowerCat 6A Shielded Patch Cords

Molex PowerCat 6A Shielded Patch Cords are key components of the PowerCat 6A shielded end-to-end solution. Designed to support high speed 10GBASE-T networks, they are also backward compatible with 10/100/1000BASE-T networks. The patch cable is made from high quality four pair 26 AWG stranded copper wire. The patch cords are pre-terminated with RJ45 plugs and feature anti-snag slim strain relief slip on boots.

- 4 pair 26 AWG shielded stranded copper cable
- Pre-terminated with RJ45 plugs
- Slim clear anti-snag slip on boots
- Suitable for ANSI/TIA-568B wiring applications
- LSOH jacket
- 10G Performance when installed as a complete PowerCat 6A Shielded System
- Available in a range of colors and lengths



Order No.	SAP No.	Description
PCD-07068-**	Consult Molex	PowerCat 6A Shielded Patch Cord 568A/B, LSOH - 0.25m
PCD-07064-**	Consult Molex	PowerCat 6A Shielded Patch Cord 568A/B, LSOH - 0.5m
PCD-07000-**	Consult Molex	PowerCat 6A Shielded Patch Cord 568A/B, LSOH - 1m
PCD-07061-**	Consult Molex	PowerCat Shielded Patch Cord 568A/B, LSOH - 1.5m
PCD-07001-**	Consult Molex	PowerCat 6A Shielded Patch Cord 568A/B, LSOH - 2m
PCD-07002-**	Consult Molex	PowerCat 6A Shielded Patch Cord 568A/B, LSOH - 3m
PCD-07004-**	Consult Molex	PowerCat 6A Shielded Patch Cord 568A/B, LSOH - 5m
PCD-07006-**	Consult Molex	PowerCat 6A Shielded Patch Cord 568A/B, LSOH - 7m
PCD-07009-**	Consult Molex	PowerCat 6A Shielded Patch Cord 568A/B, LSOH - 10m

\*\* Color Options - 0C = Red, 0E = Gray, 0H = Blue, 0J = Green, 0K = Yellow, 0W = White, 0P = Purple, 0N = Orange, BK = Black Other lengths are available, please contact your local Molex team for more information.

# PowerCat 6A Shielded



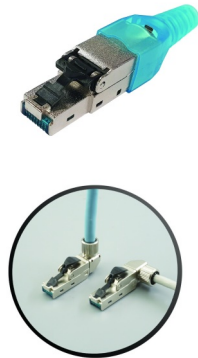
## PowerCat 6A Slim 28 AWG Shielded Patch Cords, LS0H

Molex Slim Shielded LS0H Patch Cords support Category 6A systems utilizing 28 AWG low diameter cable to reduce patch cord congestion in high density installations. Molex PowerCat 6A Slim Patch Cords are designed to support high-speed 10GBASE-T networks and offer a 35% space saving compared with standard Molex 26 AWG C6A Patch Cords. The Slim version allows for easier management and improved airflow between patched ports in high-density patching installations. The lower diameter cord makes visibility of individual plugs and ports clearer and provide improved access for patching.

- Low 5.2mm outer diameter reduces patching congestion
- Offers 35% space saving compared with standard 26 AWG cords
- Better port number visibility
- Improved access to patch plugs
- Improved airflow
- Ideal for high-density patching areas in data centers where long channel lengths are not a requirement
- Category 6A performance
- Supports IEEE 802.3 type 1,2,3 & 4 (follow installation guidance)
- 4 Pair 28 AWG stranded copper wire foil shielded LS0H sheath
- High performance C6A shielded plugs
- Consult Molex Technical Services for design and implementation guidance.

Order No.	SAP No.	Description
PCD-7030A-0*	Consult Molex	PowerCat 6A Slim 28 AWG Shielded Patch Cord LS0H 0.5m
PCD-70301-0*	Consult Molex	PowerCat 6A Slim 28 AWG Shielded Patch Cord LS0H 1m
PCD-7030B-0*	Consult Molex	PowerCat 6A Slim 28 AWG Shielded Patch Cord LS0H 1.5m
PCD-70302-0*	Consult Molex	PowerCat 6A Slim 28 AWG Shielded Patch Cord LS0H 2m
PCD-7030C-0*	Consult Molex	PowerCat 6A Slim 28 AWG Shielded Patch Cord LS0H 2.5m
PCD-70303-0*	Consult Molex	PowerCat 6A Slim 28 AWG Shielded Patch Cord LS0H 3m
PCD-70305-0*	Consult Molex	PowerCat 6A Slim 28 AWG Shielded Patch Cord LS0H 5m
PCD-70307-0*	Consult Molex	PowerCat 6A Slim 28 AWG Shielded Patch Cord LS0H 7m
PCD-70310-0*	Consult Molex	PowerCat 6A Slim 28 AWG Shielded Patch Cord LS0H 10m

\* Color Options - C = Red, E = Gray, H = Blue, K = Yellow, J = Green. Note: Conditions apply when installing these cords in a 4-connector channel with EU cable part no. CAA-00413-VL. Contact Molex Technical Support for installation design guidance.



## PowerCat 6A Field Termination Plug

Molex's Category 6A field terminable plug is designed to support 10 Gigabit networks and can be easily terminated using parallel jaw pliers. Termination is accomplished by placing the conductors into the proper wire slots in the wire cap. Placing the wire cap onto the plug, using pliers to squeeze the wiring cap. All eight conductors are simultaneously terminated when the wire cap is squeezed. This process ensures quick, consistent, reliable terminations.

- Ideal for use to provide high-bandwidth wireless access points and other IP-enabled devices such as: Surveillance cameras and infrastructure monitoring
- Ideal in data centers, premise network applications and premise automation
- Accommodates diameter conductors from 22-26 AWG solid wire
- Meets TIA-568-C.2 Category 6A component performance, Cat 5e, Cat6 and Cat6A Direct Attach link and channels

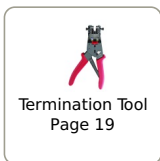
Order No.	SAP No.	Description
KSP-00001	183010086	Category 6A Field Termination Plug
KSP-00002	180190012	Category 6A Field Termination Plug, STP, Right Angle



## PowerCat 6A Shielded Patch Panels

PowerCat 6A Patch Panels features the unique DataGate shielded connector. This shielded connector offers superior alien crosstalk suppression, excellent insertion loss protection and provides enhanced electromagnetic interference (EMI) protection by utilizing robust die-cast zinc alloy connector body housing. Patch Panels are made from robust sheet metal and are supplied with removable rear cable management trays for cable strain relief and neat cable dressing, front and rear port numbering and individual ports may be color coded using connector icon labels for site specific network administration.

- 24 Ports 1U & 48 Port 2U
- EIA 568A/B wired
- Standard 19" rack mount
- IDC contacts that flex not fatigue when terminated
- Pointed IDC towers to speed termination and enhance cable retention
- Integral cable management shelf ensure bend radius compliance
- Grounding screws included



Termination Tool  
Page 19

Order No.	SAP No.	Description
PID-00217	182960000	PowerCat 6A 24 Port Patch Panel 568A/B Shielded - 1U
PID-00219	182960002	PowerCat 6A 48 Port Patch Panel 568A/B Shielded - 2U
PID-00218	182960001	PowerCat 6A 24 Port Angled Patch Panel 568A/B Shielded - 1U
PID-00220	182960003	PowerCat 6A 48 Port Angled Patch Panel 568A/B Shielded - 2U

### Accessories

CSP-00021-**	Consult Molex	Blank Connector Icon Labels 6-Pack (Bag of 10)
--------------	---------------	--

\*\* Color Options - 01 = Almond, 02 = White, 05 = Ivory, 08 = Light Gray, RD = Red, BL = Blue, GR = Green, YL = Yellow, RG = Orange, PP = Purple. All colors may be subject to availability and variable pricing.

# PowerCat 6A Shielded



## PowerCat 6A MOD-Clip DataGate Jacks

The PowerCat 6A MOD-Clip DataGate jack offers superior alien crosstalk suppression, excellent insertion loss, and provides enhanced electromagnetic interference (EMI) protection by utilizing robust die-cast zinc alloy connector body housing. This shielded connector also features a unique spring-loaded shutter that not only protects it from dust and contaminants, but the ingenious spring-loaded design also ejects improperly seated patch cords. The shielded connector is dual color coded for either 568A or 568B wiring schedules.

- Robust die-cast zinc alloy housing
- Dual color coding allows 568A/B wiring
- Patented IDC V-Shaped contacts that flex not fatigue when terminated
- Spring-Loaded Shutter
- Accepts color coded port identification labels
- Spring loaded cable/drain wire clamp
- Designed for use with Molex's MOD-Clip wallplates
- Designed to fit the Clipsal®, HPM® system of wallplates

Order No.	SAP No.	Description
MMC-00017-02	183010020	PowerCat 6A MOD-Clip Shielded Jack 8W 568 A/B White
MMC-00017-04	183010019	PowerCat 6A MOD-Clip Shielded Jack 8W 568 A/B Black

\*\* Color Options - 02 = White, 04 = Black , 08 = Gray, YL = Yellow, PP = Purple, GR = Green

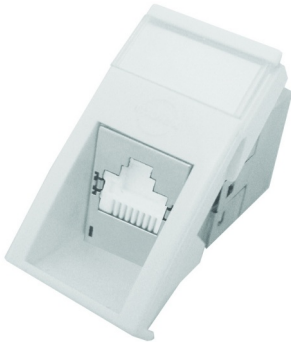
## PowerCat 6A Legrand Compatible Module

These PowerCat 6A shielded modules are compatible with the Legrand range of 45 x 45mm bezels. The angled design reduces patch cord bend radius and features a protected labeling feature. Individual ports may be color coded using a connector icon, for site-specific network administration.

- Protected labeling facility
- 22.5 x 45mm & 45 x 45mm fascia
- Compatible with Legrand Mosaic wallplates (not supplied)
- Supplied with DataGate C6A jack
- Available in either traditional rear or side entry variations
- Side entry jack allows cable termination either side

Order No.	SAP No.	Description
MLG-00030-**	183010006	PowerCat 6A 22.5 x 45mm Legrand compatible Module
MLG-00031-**	183010007	PowerCat 6A 45 x 45mm Legrand compatible Module

\*\* Color Options - 02 = White, 04 = Black



Termination Tool  
Page 19

## PowerCat 6A Euromod II Module

The Euromod modular system provides a flexible and versatile method of installation, allowing the user the choice of installing as many data outlets as required. Compatible with the Euromod range of wallplates, the module is supplied with a protected label facility and the angled design reduces patch cord bend radius. The product is shipped complete with the shielded C6A DataGate jack and 25 x 50mm fascia. Individual ports may be color coded for site-specific network administration by fitting connector icon labels (part no. CSP-00021-0\*\*).

- Protected labeling facility
- 22 x 50mm fascia
- Compatible with Euromod wallplates
- Supplied with DataGate C6A jack

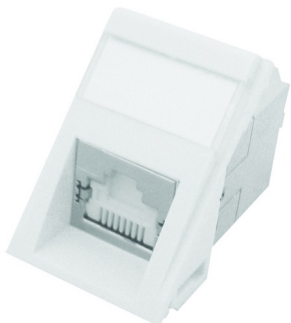
Order No.	SAP No.	Description
MEU-00065-02	183010005	PowerCat 6A Angled Euromod II RJ45 Module, 568A/B - White
MEU-00065-04	183010012	PowerCat 6A Angled Euromod II RJ45 Module, 568A/B - Black

## PowerCat 6A MOD-SNAP III Module

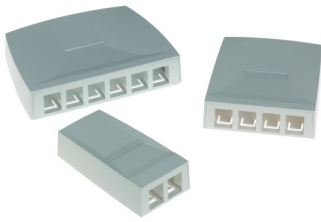
The MOD-SNAP III Module is ideal for UK floor box applications and may be used with the MOD-SNAP wallplate range. The module is supplied with a protected label facility and the angled design reduces patch cord bend radius. The product is shipped complete with the shielded C6A DataGate jack and the 38.5 x 25mm (BT6C size) fascia.

- Protected labeling facility
- UK floorbox compatible
- Compatible with MOD-SNAP wallplates
- Supplied with DataGate C6A jack

Order No.	SAP No.	Description
MMS-00017-02	183010040	PowerCat 6A Angled MOD-SNAP III RJ45 Module, 568A/B - White
MMS-00017-04	183010011	PowerCat 6A Angled MOD-SNAP III RJ45 Module, 568A/B - Black



# PowerCat 6A Shielded



## Synergy Surface Mount Box

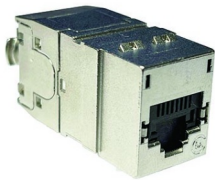
The PowerCat Synergy Surface Box is ideal for use in open office cabling. The 2, 4 and 6 port boxes are supplied unloaded and accept the DataGate Jack and Synergy Single Position Modules. The single port versions ship loaded with the DataGate Jack. Synergy Surface Boxes offer simple and organized installation in areas where surface mount is the only option. Cable can be installed from the sides or base of the box. Individual ports can also be color coded for site-specific network administration using connector icon labels.

- Stylish design
- Simple, organized cable entry and installation
- Screw fixing
- Clear and concise labeling
- DataGate Jack & Synergy Module compatible



DataGate Jacks  
Page 14

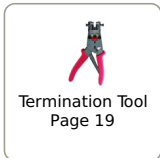
Order No.	SAP No.	Description
SSY-00014-02	181340013	PowerCat 2 Port Synergy Surface Box, Unloaded - White
SSY-00015-02	181340016	PowerCat 4 Port Synergy Surface Box, Unloaded - White
SSY-00016-02	181340019	PowerCat 6 Port Synergy Surface Box, Unloaded - White
SBX-00009-02	182950000	PowerCat 6A 1 Port Synergy Surface Box RJ45 568A/B Shielded - White (loaded)
SBX-00005-02	181770326	PowerCat 6 1 Port Synergy Surface Box RJ45 UTP White (loaded)
SBX-00006-02	18338002	PowerCat 5e 1 Port Synergy Surface Box RJ45 UTP White (loaded)



## PowerCat 6A DataGate Shielded Straight and Side Entry Jack

The PowerCat 6A DataGate jack offers superior alien crosstalk suppression, excellent insertion loss, and provides enhanced electromagnetic interference (EMI) protection by utilizing robust die cast zinc alloy jack body housing. This shielded jack also features a unique spring loaded shutter that not only protects it from dust and contaminants, but the ingenious spring loaded design also ejects improperly seated patch cords. The shielded jack is dual colour coded for either 568A or 568B wiring schedules. The Molex C6A DataGate RJ45 360 ° shielded jack accommodates flexible cable routing by allowing 90 ° or 180 ° cable entry. The PowerCat 6A DataGate Shielded Jack was specifically designed for highspeed 10GB data transmission. This unique modular jack is also backwards compatible with Shielded C6 and C5e systems. Molex recommends that the full range of PowerCat 6A Shielded products be used in an end-to-end system to maximize cabling performance. This system is compliant with the ISO/IEC 11801 Amd 1 and ANSI/TIA-568.2-D requirements for the support of 10GBASE-T transmission.

- Robust die cast zinc alloy housing
- 360°Shielded
- Accommodates flexible cable routing by allowing 90 ° or 180 ° cable entry
- Dual Color coding allows 568A/B wiring
- Patented IDC (insulation displacement contact) V-shaped contacts that flex not fatigue when terminated
- Spring-Loaded Shutter
- Accepts color coded port identification labels
- Category 6A performance when installed as a complete PowerCat Shielded System
- Spring loaded cable/drain wire clamp
- Cable can be terminated in 3 directions – Straight, on left or right side of jack
- Complies with ISO/IEC 11801 and TIA Cat 6A channel and PL requirements
- Jack can be terminated with 4 Pair Termination Tool or standard IDC Punch Down Tool
- RoHS Compliant
- Molex DataGate jacks may accommodate both solid (AWG22 to AWG24) and stranded (AWG26) cables

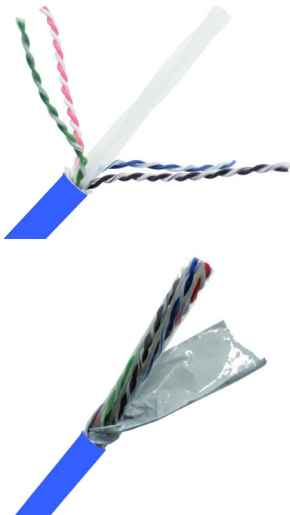


Termination Tool  
Page 19

Order No.	SAP No.	Description
KSJ-00096.**	Consult Molex	PowerCat 6A DataGate Shielded Straight and Side Entry Jack

\*\* Color options: 01 - Almond, 02 - White, 04 - Black, 05 - Ivory, 08 - Gray, BL - Blue, GR - Green, RG - Orange, PP - Purple, RD - Red, YL - Yellow \*\* Please note: While termination of the jack is possible with the 110 punch-down tool, tight tolerances within the outlet design could result in an unintentional short between the conductor wires and the metal housing. Therefore, Molex strongly recommends the use of the 4-pair termination tool to ensure even, consistent terminations, and minimize the risk of this occurring.

# PowerCat 6A Unshielded

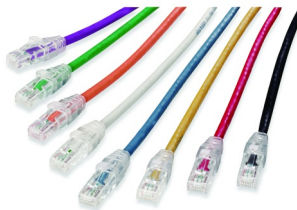


## PowerCat 6A UTP LS0H Cable Gen II

The PowerCat 6A UTP LS0H Cable is specifically designed to support high-speed data network applications such as 10GBASE-T. The innovative design includes a double thermoplastic polymer, aluminum foil tape wrap surrounding the pairs, which provides excellent Alien Crosstalk defense. The low diameter of the cable allows for easier handling and higher cable density in containment, reducing cost. The product is 3rd party verified to ANSI/TIA-568.2-D and ISO 11801 Category 6A standards. This cable is part of our PowerCat 6A System which is suitable for the most demanding PoE Applications.

- Supports up to 500MHz frequency
- Noise canceling isolation wrap surrounds the pairs for AXT protection
- IEEE 802.3bt-2018 PoE compliance
- ANSI-568.2-D and ISO-11801:2017 standards verified, ensuring reliability for high bandwidth mission-critical applications
- Easy to install. No drain wire, grounding or bonding required
- Low outer cable diameter 7.2mm nominal
- PoE Compliant with IEC 802.3bt from Type 1 to Type 4 as part of a Molex C6A System

Order No.	SAP No.	Description
CAA-00445-BL	1810000034	PowerCat 6A UTP LS0H Cable 500m reel, Blue
CAA-00445-GR	1810000035	PowerCat 6A UTP LS0H Cable 500m reel, Green



## PowerCat 6A UTP Patch Cord

Molex PowerCat 6A Patch Cords are designed to support high speed 10GBASE-T networks and are backward compatible with 10/100/1000BASE-T networks. The patch cable is made from high quality four pair 26 AWG stranded copper wire. Available in a range of colors and lengths, PowerCat 6A patch cords are pre-terminated with RJ45 plugs and feature anti-slug slim strain relief slip on boots.

- 4 pair 26 AWG stranded copper wire
- Pre-terminated with UTP RJ45 plugs
- Slim clear anti-slug slip on boots
- Suitable for EIA 568A or 568B wiring
- LS0H sheath
- 10G Performance when installed as a complete PowerCat 6A UTP System

Order No.	SAP No.	Description
PCD-09101-**-	Consult Molex	PowerCat 6A UTP Patch Cord LS0H 1m
PCD-09102-**-	Consult Molex	PowerCat 6A UTP Patch Cord LS0H 2m
PCD-09103-**-	Consult Molex	PowerCat 6A UTP Patch Cord LS0H 3m
PCD-09105-**-	Consult Molex	PowerCat 6A UTP Patch Cord LS0H 5m
PCD-09107-**-	Consult Molex	PowerCat 6A UTP Patch Cord LS0H 7m
PCD-09110-**-	Consult Molex	PowerCat 6A UTP Patch Cord LS0H 10m

\*\* Color options: 0C=Red, 0E=Gray, 0H=Blue, 0J=Green, 0K=Yellow, 0W=White, 0P=Purple, 0N=Orange, BK=Black.



## PowerCat 6A UTP Keystone Jack Gen II

The product is designed to comply with the transmission performance of ANSI/TIA-568.2-D:2018 and ISO/IEC 11801:2017 Augmented Category 6A. The Keystone Jack design is a popular, universal dimension that fits into a wide range of wall outlet and enclosure products. The PowerCat 6A UTP jack is designed to achieve the high level of functionality required for high-speed 10 Gbps data transmission. The product is also backward compatible with Category 6 and 5e systems. The Category 6A UTP Keystone Jack is 3rd party tested and verified for transmission performance, safety and PoE+ compliance. The C6A UTP Keystone Jack Gen II is designed to be terminated by 4 Pair Termination Tool designed specifically for compatibility with the the Gen II C6A UTP jack. The tool is a robust, reliable product offering fast, fault-less gas-tight termination of all four pairs of solid cable simultaneously.

- Popular Keystone design
- 568A or 568B wiring options
- Rear metal cable retention cap provides alien crosstalk protection
- Transmission performance independently verified
- Designed for high-speed transmission performance
- Compatible with Molex range of Keystone Jack work area outlets and patch panels

Order No.	SAP No.	Description
KSJ-00099-02	1810020009	Keystone Jack C6A UTP 568A/B Gen II - White
KSJ-00099-04	1810020010	Keystone Jack C6A UTP 568A/B Gen II - Black
KSJ-00099-05	1810020011	Keystone Jack C6A UTP 568A/B Gen II - Ivory
KSJ-00099-08	1810020012	Keystone Jack C6A UTP 568A/B Gen II - Gray
KSJ-00099-BL	1810020013	Keystone Jack C6A UTP 568A/B Gen II - Blue
KSJ-00099-RD	1810020014	Keystone Jack C6A UTP 568A/B Gen II - Red
KSJ-00099-YL	1810020015	Keystone Jack C6A UTP 568A/B Gen II - Yellow





# PowerCat 6A Unshielded



## Keystone Patch Panel

The Molex Keystone panel provides an unloaded panel that can be loaded with the Molex range of Keystone UTP jacks. Keystone patch panels are designed to be loaded with individual jacks allowing for easy maintenance if jacks have to be removed or replaced. Suitable for small installations with the feature of expanding for future upgrades.

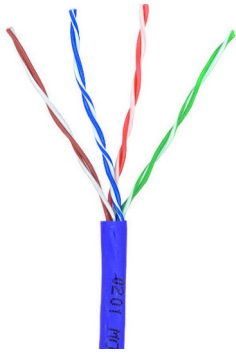
- 1U 24 Port
- Standard 19" rack mount
- Unloaded Keystone Aperture
- Universal front labeling system that accepts 13mm commercial labels for a professional appearance
- Accommodates PowerCat 6 and PowerCat UTP Keystone jacks

Order No.	SAP No.	Description
PID-00257	182960014	24 Port Keystone Jack Patch Panel 1U Unloaded - Metric fixing kit
PID-00289	182960027	48 Port Keystone Jack Patch Panel 2U Unloaded - Metric fixing kit
KSJ-00064-**	Consult Molex	Keystone Blank

\*\* Color Options: 02 =White, 04 = Black



## PowerCat 6

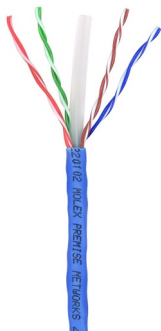


### PowerCat 6 U/UTP Cable

Molex PowerCat 6 4 Pair U/UTP cable has been designed to support high speed data transmission systems such as Gigabit Ethernet. The cable is part of the PowerCat 6 range of products that are designed to comply with the Category 6 specification. We recommend that the full range of PowerCat 6 products are used in a system to maximize cabling performance, providing extended frequency response and enhanced bandwidth.

- Enhanced performance 4 pair PVC cable
- Category 6 compliant
- Color coded for ease of termination
- PVC sheath

Order No.	SAP No.	Description
CAA-00429-BL	181740162	PowerCat 6 U/UTP LS0H - 305m Box - Blue
CAA-00429-0E	181740163	PowerCat 6 U/UTP LS0H - 305m Box - Gray
CAA-00429-GR	181740164	PowerCat 6 U/UTP LS0H - 500m Reel - Green
CAA-00429-YL	181740165	PowerCat 6 U/UTP LS0H - 500m Reel - Yellow
CAA-00429-0N	181740166	PowerCat 6 U/UTP LS0H - 500m Reel - Orange
CAA-00429-RD	181740167	PowerCat 6 U/UTP LS0H - 500m Reel - Red
CAA-00429-BK	181740168	PowerCat 6 U/UTP LS0H - 500m Reel - Black
CAA-00430-0E	181750041	PowerCat 6 U/UTP LS0H - 500m Reel - Gray
CAA-00277-0H	181740151	PowerCat 6 U/UTP Cable PVC (per meter) - Blue
CAA-00277-0E	181740152	PowerCat 6 U/UTP Cable PVC (per meter) - Gray
CAA-00277-0J	181740153	PowerCat 6 U/UTP Cable PVC (per meter) - Green
CAA-00277-0K	181740154	PowerCat 6 U/UTP Cable PVC (per meter) - Yellow
CAA-00277-0N	181740155	PowerCat 6 U/UTP Cable PVC (per meter) - Orange
CAA-00277-0C	181740156	PowerCat 6 U/UTP Cable PVC (per meter) - Red
CAA-00277-BK	181740157	PowerCat 6 U/UTP Cable PVC (per meter) - Black
CAA-00277-0W	181740191	PowerCat 6 U/UTP Cable PVC (per meter) - White
CAA-00277-VL	181740192	PowerCat 6 U/UTP Cable PVC (per meter) - Violet

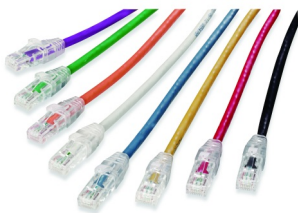


### Category 6 U/UTP Gel-Filled Outdoor Cable Nylon Sheath

The Molex outside plant gel-filled Category 6 4 Pair U/UTP cable utilises a HDPE compound which insulates the cores while a PE (UV) sheath provides protection against moisture and UV. An additional nylon outer jacket provides protection against abrasion and termites. The rugged construction of this cable makes it ideal for outdoor/underground installations.

- Category 6 compliant
- PE (UV) and nylon sheathed for greater protection
- UV resistant
- Suitable for outdoor/underground Installations
- Water resistant gel-filled design
- Compliant with EN 50575:2014+A1:2016 EU Reaction to Fire Performance criteria

Order No.	SAP No.	Description
CAA-00419-0H	181740138	Cat6 U/UTP Gel Filled Outdoor PE Cable Nylon Fca Blue 305 m



### PowerCat 6 U/UTP Patch Cords

Molex PowerCat 6 U/UTP Patch Cords are key components of PowerCat 6 U/UTP End-to-End Solution. The PowerCat 6 Patch Cords are designed to support data networks for 10/100BASE-T and 1000BASE-T applications. The patch cable is made from high quality four pair 24 AWG stranded copper wire. Available in a range of colors and lengths, PowerCat 6 Patch Cords are pre-terminated with RJ45 plugs and feature anti-snag slim strain relief slip on boots.

- 4 pair 24 AWG stranded wire
- Pre-terminated with WE8W plugs
- Slim clear anti-snag slip on boots
- Suitable for EIA 568A or 568B wiring applications
- LS0H sheath

Order No.	SAP No.	Description
PCD-02000-**-	Consult Molex	PowerCat 6 Patch Cord U/UTP, LS0H - 0.5m
PCD-02001-**-	Consult Molex	PowerCat 6 Patch Cord U/UTP, LS0H - 1m
PCD-02002-**-	Consult Molex	PowerCat 6 Patch Cord U/UTP, LS0H - 1.5m
PCD-02003-**-	Consult Molex	PowerCat 6 Patch Cord U/UTP, LS0H - 2m
PCD-02005-**-	Consult Molex	PowerCat 6 Patch Cord U/UTP, LS0H - 3m
PCD-02009-**-	Consult Molex	PowerCat 6 Patch Cord U/UTP, LS0H - 5m
PCD-02013-**-	Consult Molex	PowerCat 6 Patch Cord U/UTP, LS0H - 7m
PCD-02019-**-	Consult Molex	PowerCat 6 Patch Cord U/UTP, LS0H - 10m

Note: Other lengths are available, please contact Molex \*\* Color Options - 0C = Red, 0E = Gray, 0H = Blue, 0J = Green, 0K = Yellow, 0W = White, 0P = Purple, 0N = Orange, BK = Black

## PowerCat 6



### PowerCat 6 Patch Panels

PowerCat 6 Patch Panels feature the shuttered DataGate Connector which is dual color coded for either 568A or 568B wiring. The panels come complete with an integral cable management tray for cable strain relief and tidy cable dressing. Available in 24 or 48 port versions, with front and rear port labeling. Individual ports can be color coded using an icon for site-specific network administration.

- Shuttered DataGate RJ45
- 24 Port 1U, 48 Port 2U
- EIA 568A/B color coded
- Integral rear cable management tray
- Standard 19" rack mount
- Graphite Gray finish

Order No.	SAP No.	Description
PID-00141	182090009	PowerCat 6 24 Port Patch Panel RJ45 568A/B UTP C6 - 1U - Graphite
PID-00142	182040010	PowerCat 6 48 Port Patch Panel RJ45 568A/B UTP C6 - 2U - Graphite
<b>Accessories</b>		
CSP-00021-**-	Consult Molex	Blank Connector Icon Labels 6-Pack (Bag of 10)
CSP-00022-**-	Consult Molex	Data Connector Icon Labels 6-Pack (Bag of 10)
CSP-00023-**-	Consult Molex	Voice Connector Icon Labels 6-Pack (Bag of 10)

\*\*Color Options - 01 = Almond, 02 = White, 04 = Black, 05 = Ivory, 08 = Light Gray, RD = Red, BL = Blue, GR = Green, YL = Yellow, RG = Orange, PP = Purple



### PowerCat Unloaded DataGate Panels

Molex PowerCat Unloaded DataGate Patch Panels can be configured to provide the exact number of modular ports required. DataGate Category 5e UTP, Category 6 UTP, or Category 6A shielded jacks can be terminated to cable and then snapped into this DataGate patch panel. The patch panel and rear cable manager are constructed of cold-rolled steel for strength and durability.

- Available in 1U 24P Flat, 1U 24P Angled, 2U 48P Flat, 2U 48P Angled
- Easy snap in DataGate UTP or Shielded Jacks (sold separately)
- Modularity provides installation flexibility
- Front portable labeling
- Individually removable patch panel ports
- Removable cable management shelves ensure bend radius compliance
- ANSI and metric hardware kit included
- Grounding screws included

Order No.	SAP No.	Description
PID-00258	180810031	PowerCat 24 Port DataGate Flat Patch Panel, Unloaded UTP or Shielded - 1U - Black
PID-00259	180810032	PowerCat 24 Port DataGate Angled Patch Panel, Unloaded UTP or Shielded - 1U - Black
PID-00260	180810033	PowerCat 48 Port DataGate Flat Patch Panel, Unloaded UTP or Shielded - 2U - Black
PID-00261	180810034	PowerCat 48 Port DataGate Angled Patch Panel, Unloaded UTP or Shielded - 2U - Black
KSJ-00005-0*	Consult Molex	Single Position Blank Module (Bag of 25)

\* Color Options - 2 = White, 4 = Black



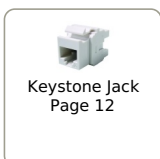
### Keystone Patch Panel

The Molex Keystone panel provides an unloaded panel that can be loaded with the Molex range of Keystone UTP jacks. Keystone patch panels are designed to be loaded with individual jacks allowing for easy maintenance if jacks have to be removed or replaced. Suitable for small installations with the feature of expanding for future upgrades.

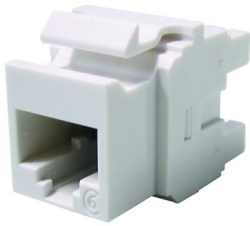
- 1U 24 Port
- Standard 19" rack mount
- Unloaded Keystone Aperture
- Universal front labeling system that accepts 13mm commercial labels for a professional appearance
- Accommodates PowerCat 6 and PowerCat UTP Keystone jacks

Order No.	SAP No.	Description
PID-00257	182960014	24 Port Keystone Jack Patch Panel 1U Unloaded - Metric fixing kit
PID-00289	182960027	48 Port Keystone Jack Patch Panel 2U Unloaded - Metric fixing kit
KSJ-00064-**-	Consult Molex	Keystone Blank

\*\* Color Options: 02 = White, 04 = Black



## PowerCat 6



### PowerCat 6 UTP Keystone Jack

Utilizing patented IDC V-shaped contacts that flex not fatigue when terminated, the RJ45 Keystone Jack is compatible with any product that accepts the standard keystone profile.

- Dual color coding allows 568A/B wiring
- Patented IDC V-Shaped contacts that flex not fatigue when terminated
- Features pointed IDC towers to speed termination and enhance cable retention
- RJ11 & RJ12 compatible
- Molded category identification on jack face

Order No.	SAP No.	Description
KSJ-00033-**	Consult Molex	Keystone Jack, Category 6, 8W, 568A/B

\*\* Color Options - 01 = Almond, 02 = White, 04 = Black, 05 = Ivory, 08 = Light Gray, RD = Red, BL = Blue, GR = Green, YL = Yellow, RG = Orange, PP = Purple. Standard stocked color - White. All colors may be subject to availability and variable pricing.



### Category 6 UTP Field Termination Plug

The Molex Category 6 field termination plug is designed to support 1gb networks and can be easily terminated using parallel jaw pliers. The IDC is designed to accommodate different diameter conductors from 23 AWG- 26 AWG Solid Wire. The Field Termination Plug meets TIA-568.2-D Category 6 component performance. Ideal for use to provide wireless access points. It is also ideal in premise network applications, premise automation such as lighting, HVAC and other environmental sensor applications.

- Supports 1gb networks
- Designed to accommodate conductors from 23 AWG - 26 AWG
- Meets TIA-568.2-D Category 6 component performance
- UL approved
- Ideal for wireless access points and IP-enabled devices, data centers and premise network applications
- PoE+ Compliant
- Tool-free, no punch down tool required

Order No.	SAP No.	Description
KSP-00003	Consult Molex	Category 6 UTP Field Termination Plug



### PowerCat 6 MOD-Clip DataGate Jack

The MOD-Clip DataGate jack is designed to maintain clean secure connections. The RJ45 jack features a patented 'spring-loaded shutter' which protects it from dust and contaminants as well as provides tactile feedback - the spring-loaded shutter pops out an improperly seated patch cord - all with single-handed plug-in and removal. Available in seven colors MOD-Clip DataGate jacks utilize patented IDC V-shaped contacts that flex not fatigue when terminated.

- "Spring-Loaded" gate prevents incomplete mating
- IDC contacts that flex not fatigue when terminated
- Pointed IDC towers to speed termination and enhance cable retention
- 568 A/B wiring configuration
- Allows rear and side entry cable termination
- Designed for use with Molex's MOD-Clip wallplates
- Designed to fit the Clipsal, HPM and PDL systems of wallplates

Order No.	SAP No.	Description
MMC-00010-**	Consult Molex	PowerCat 6 MOD-Clip DataGate Jack, 568A/B

\*\* Color Options - 02 = White, 04 = Black

### PowerCat 6 Euromod II Module

The Euromod modular system provides a flexible and versatile method of installation, allowing the user the choice of installing as many data outlets as required. The modules are fully assembled units featuring the Molex shuttered DataGate connector in a 25 x 50mm fascia. Individual ports can also be color coded for site-specific network administration using connector icon labels.

- Shuttered RJ45 DataGate connector
- 25 x 50mm fascia
- Individual port color coding option

Order No.	SAP No.	Description
MEU-00056-02	181730016	PowerCat 6 Euromod II Module RJ45 568A/B UTP - White
MEU-00056-04	181730017	PowerCat 6 Euromod II Module RJ45 568A/B UTP - Black
17-0412-02	180060060	Euromod Quarter (12.5 x 50mm) Blank - White
17-0413-02	181370005	Euromod Half (25 x 50mm) Blank - White
17-0414-02	180060062	Euromod Full (50 x 50mm) Blank - White



## PowerCat 6



### PowerCat 6 Angled MOD-SNAP III Module

The angled MOD-SNAP III Module is ideal for floor box applications. The product is a fully assembled unit featuring the shuttered DataGate connector. The angled design reduces patch cord bend radius particularly in shallow floor box installations. The angled MOD-SNAP Module can also be used in the MOD-SNAP range of wallplates.

- Shuttered RJ45 DataGate connector
- Protected labeling facility
- Floor box and wallplate compatible
- 38.5 x 25mm fascia (BT6C size)

Order No.	SAP No.	Description
MMS-00013-**	Consult Molex	PowerCat 6 Angled MOD-SNAP III Module RJ45 568A/B UTP
MMS-00014-**	Consult Molex	MOD-SNAP Module Blank

\*\* Color Options - 02 = White, 04 = Black



### PowerCat 6 Legrand Compatible Module

The PowerCat 6 22.5 x 45mm and 45 x 45mm modules are compatible with the Legrand Mosaic range of 45 x 45mm bezels. Two modules or a single module and a blank may be installed in this format. The product is a fully assembled unit featuring the shuttered DataGate connector. The angled design reduces patch cord bend radius and features a protected labeling facility. Individual ports may be color coded using a connector icon for site-specific network administration

- Legrand Mosaic 45 x 45mm bezel compatible
- Shuttered RJ45 DataGate connector
- Protected labeling facility
- Angled fascia

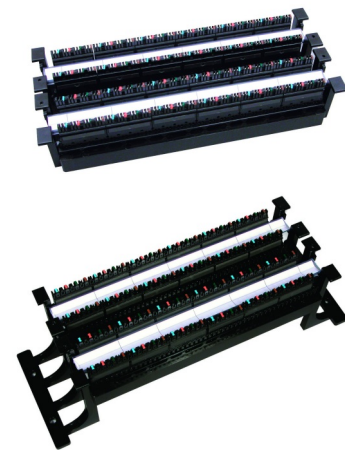
Order No.	SAP No.	Description
MLG-00021-02	188000016	PowerCat 6 22.5 x 45mm Legrand Compatible Module RJ45 568A/B UTP - White
MLG-00024-02	188000068	PowerCat 6 45 x 45mm Legrand Compatible Module RJ45 568A/B UTP - White
16.A0012	180070055	22.5 x 45mm Blank Module - White

### Category 6 PDS 96 Pair Termination Block Kits

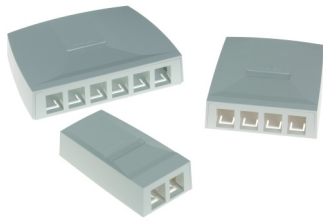
The 96 Pair Termination Block Base is the key component of the C6 PDS system and has the same footprint as the Category 5e 100 Pair Termination Block Base. Category 6 performance is guaranteed by the unique pair separation (for the reduction of cross-talk) designed into the base. Manufactured from flame retardant thermoplastic, the termination block base features cut-outs for easy cable routing and is available with or without legs. Supplied with label cards and label holders and 24 4 Pair IDC connectors.

- Industry standard wall mount format
- Available with or without mounting legs
- Supplied with label cards and holders
- Features cut-outs for cable routing
- Available as a kit with IDC connectors or as stand alone bases

Order No.	SAP No.	Description
KPD-00078	181980088	96 Pair Base Without Legs (24 Category 6 4 Pair IDC Connectors) C6
KPD-00079	181980068	96 Pair Base With Legs (24 Category 6 4 Pair IDC Connectors) C6
KPD-00089	181980072	96 Pair Base Without Legs (No Connectors) C6
KPD-00090	181980073	96 Pair Base With Legs (No Connectors) C6



# PowerCat 6



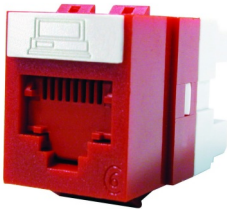
## Synergy Surface Mount Box

The PowerCat Synergy Surface Box is ideal for use in open office cabling. The 2, 4 and 6 port boxes are supplied unloaded and accept the DataGate Jack and Synergy Single Position Modules. The single port versions ship loaded with the DataGate Jack. Synergy Surface Boxes offer simple and organized installation in areas where surface mount is the only option. Cable can be installed from the sides or base of the box. Individual ports can also be color coded for site-specific network administration using connector icon labels.

- Stylish design
- Simple, organized cable entry and installation
- Screw fixing
- Clear and concise labeling
- DataGate Jack & Synergy Module compatible



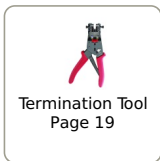
Order No.	SAP No.	Description
SSY-00014-02	181340013	PowerCat 2 Port Synergy Surface Box, Unloaded - White
SSY-00015-02	181340016	PowerCat 4 Port Synergy Surface Box, Unloaded - White
SSY-00016-02	181340019	PowerCat 6 Port Synergy Surface Box, Unloaded - White
SBX-00009-02	182950000	PowerCat 6A 1 Port Synergy Surface Box RJ45 568A/B Shielded - White (loaded)
SBX-00005-02	181770326	PowerCat 6 1 Port Synergy Surface Box RJ45 UTP White (loaded)
SBX-00006-02	18338002	PowerCat 5e 1 Port Synergy Surface Box RJ45 UTP White (loaded)



## PowerCat 6 UTP DataGate Jack

The DataGate Jack is the cornerstone of the Molex CES PowerCat 6 System performance. This jack features a unique spring-loaded shutter that not only protects it from dust and contaminants, but the ingenious spring-loaded design also ejects improperly seated patch cords. The product is dual color coded for either 568A or 568B wiring schedules and is backwards compatible with C5e systems.

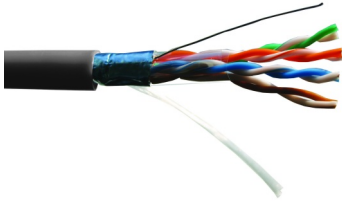
- Dual color coding allows 568A/B wiring
- Patented IDC V-Shaped contacts that flex not fatigue when terminated
- Patented spring-loaded shutter
- Accepts color coded port identification labels
- Molex 4 Pair Termination Tool or industry standard 110 termination tool compatible



Order No.	SAP No.	Description
KSJ-00018-**	Consult Molex	PowerCat 6 DataGate Jack, 568A/B

\*\* Color Options - 01 = Almond, 02 = White, 04 = Black, 05 = Ivory, 08 = Light Gray, RD = Red, BL = Blue, GR = Green, YL = Yellow, RG = Orange, PP = Purple. Standard stocked colors - Black and White. All colors subject to availability and variable pricing.

## PowerCat 5e

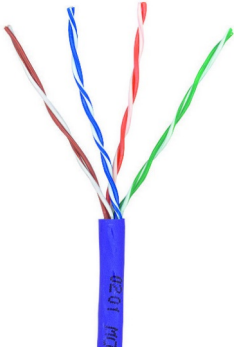


### PowerCat 5e F/UTP Cable

PowerCat 5e F/UTP 4 pair cable with overall shield and drain-wire is available in PVC. Available in 305m.

- 4 pair PVC Cable
- Color coded pairs for ease of termination
- 305m reel

Order No.	SAP No.	Description
CAA-00403-0E	Consult Molex	PowerCat 5e F/UTP PVC Cable - 500m reel

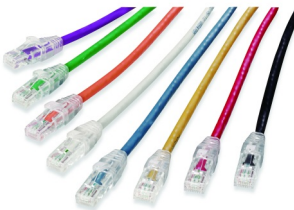


### PowerCat 5e U/UTP Cable

The PowerCat Cat 5e U/UTP cable is designed to support ultra high speed data networks such as Gigabit Ethernet (1000 Base-T) and features color coded pairs for ease of termination.

- 4 pair LS0H and PVC Cable
- Available in 305m pull boxes
- Available in blue and gray sheaths for application versatility

Order No.	SAP No.	Description
CAA-00375-0H	181700137	PowerCat U/UTP C5e PVC - 500m Reel - Blue
CAA-00375-0E	181700138	PowerCat U/UTP C5e PVC -500m Reel - Gray
CAA-00375-0C	181700142	PowerCat U/UTP C5e PVC -500m Reel - Red
CAA-00375-0J	181700139	PowerCat U/UTP C5e PVC -500m Reel - Green
CAA-00375-0K	181700140	PowerCat U/UTP C5e PVC -500m Reel - Yellow
CAA-00375-0N	181700141	PowerCat U/UTP C5e PVC -500m Reel - Orange
CAA-00375-BK	181700143	PowerCat U/UTP C5e PVC -500m Reel - Black
CAA-00427-RD	181700152	PowerCat U/UTP C5e LS0H - 305m Box - Red
CAA-00427-0E	181700153	PowerCat U/UTP C5e LS0H - 305m Box - Gray
CAA-00427-BL	181700154	PowerCat U/UTP C5e LS0H -500m Reel - Blue
CAA-00427-GR	181700155	PowerCat U/UTP C5e LS0H -500m Reel - Green
CAA-00427-YL	181700156	PowerCat U/UTP C5e LS0H - 500m Reel - Yellow
CAA-00427-0N	181700157	PowerCat U/UTP C5e LS0H -500m Reel - Orange
CAA-00427-BK	181700158	PowerCat U/UTP C5e LS0H -500m Reel - Black
CAA-00428-0E	181710025	PowerCat U/UTP C5e -500m Reel - Gray
39-504-5E	181700098	PowerCat U/UTP C5e LS0H Cable, Dca-s2,d2,a1 - 305m Reel - Violet



### PowerCat UTP Patch Cords

Molex PowerCat 5e U/UTP Patch Cords are key components of PowerCat 5e U/UTP End-to-End Solution. PowerCat Patch Cords were designed to support data networks for 10/100BASE-T and 1000BASE-T applications. The patch cable is made from high quality 4 pair 24 AWG stranded copper wire. Available in a range of colors and lengths, PowerCat 5e patch cords are pre-terminated with RJ45 plugs and feature anti-slug slim strain relief slip on boots.

- 4 pair 24 AWG stranded wire
- Pre-terminated with WE8W plugs
- Slim clear anti-slug slip on boots
- Suitable for EIA 568A or 568B wiring applications
- LS0H sheath
- RoHS Compliant

Order No.	SAP No.	Description
PCD-01000-**-	Consult Molex	PowerCat 5e Patch Cord U/UTP, LS0H - 0.5m
PCD-01001-**-	Consult Molex	PowerCat 5e Patch Cord U/UTP, LS0H - 1m
PCD-01002-**-	Consult Molex	PowerCat 5e Patch Cord U/UTP, LS0H - 1.5m
PCD-01003-**-	Consult Molex	PowerCat 5e Patch Cord U/UTP, LS0H - 2m
PCD-01005-**-	Consult Molex	PowerCat 5e Patch Cord U/UTP, LS0H - 3m
PCD-01009-**-	Consult Molex	PowerCat 5e Patch Cord U/UTP, LS0H - 5m
PCD-01013-**-	Consult Molex	PowerCat 5e Patch Cord U/UTP, LS0H - 7m
PCD-01019-**-	Consult Molex	PowerCat 5e Patch Cord U/UTP, LS0H - 10m

\*\* Color Options - 0C=Red, 0E=Gray, 0H=Blue, 0J=Green, 0K=Yellow, 0W=White, 0P=Purple, 0N=Orange, BK=Black All colors and lengths may be subject to availability and variable pricing.

### PowerCat DataGate Patch Panel

PowerCat Category 5e DataGate Panels feature the shuttered DataGate connector. These panels come with integral rear cable management trays and are available in 24 and 48 port versions. Individual ports can be color coded using an icon for site-specific network administration.

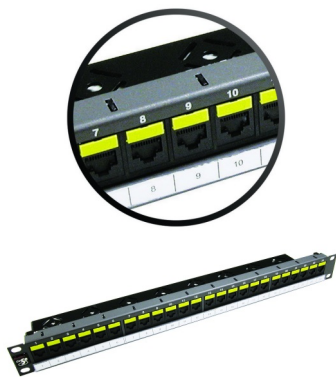
- 19" Shuttered DataGate Category 5e Panel
- EIA 568A/B color coded
- Integral cable management tray
- Graphite gray finish

Order No.	SAP No.	Description
PID-00174	182080372	PowerCat 5e 24 Port DataGate Patch Panel RJ45 568A/B UTP - 1U
PID-00175	182080374	PowerCat 5e 48 Port DataGate Patch Panel RJ45 568A/B UTP - 2U

#### Accessories

CSP-00021-**-	Consult Molex	Blank Connector Icon Labels 6-Pack (Bag of 10)
CSP-00022-**-	Consult Molex	Data Connector Icon Labels 6-Pack (Bag of 10)
CSP-00023-**-	Consult Molex	Voice Connector Icon Labels 6-Pack (Bag of 10)

\*\* Color Options - 01 = Almond, 02 = White, 04 = Black, 05 = Ivory, 08 = Light Gray, RD = Red, BL = Blue, GR = Green, YL = Yellow, RG = Orange, PP = Purple



## PowerCat 5e



Keystone Jack  
Page 12

### Keystone Patch Panel

The Molex Keystone panel provides an unloaded panel that can be loaded with the Molex range of Keystone UTP jacks. Keystone patch panels are designed to be loaded with individual jacks allowing for easy maintenance if jacks have to be removed or replaced. Suitable for small installations with the feature of expanding for future upgrades.

- 1U 24 Port
- Standard 19" rack mount
- Unloaded Keystone Aperture
- Universal front labeling system that accepts 13mm commercial labels for a professional appearance
- Accommodates PowerCat 6 and PowerCat UTP Keystone jacks

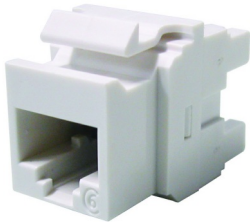
Order No.	SAP No.	Description
PID-00257	182960014	24 Port Keystone Jack Patch Panel 1U Unloaded - Metric fixing kit
PID-00289	182960027	48 Port Keystone Jack Patch Panel 2U Unloaded - Metric fixing kit
KSJ-00064-**	Consult Molex	Keystone Blank

\*\* Color Options: 02 = White, 04 = Black

### PowerCat 5e UTP Keystone Jack

Utilizing patented IDC V-shaped contacts that flex not fatigue when terminated, the RJ45 Keystone Jack is compatible with any product that accepts the standard keystone profile.

- Dual color coding allows 568A/B wiring
- Patented IDC V-Shaped contacts that flex not fatigue when terminated
- Features pointed IDC towers to speed termination and enhance cable retention
- Molded category identification on jack face



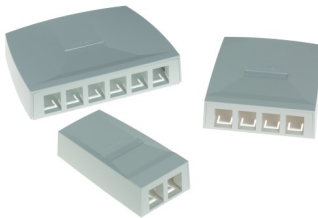
Order No.	SAP No.	Description
KSJ-00032-**	Consult Molex	Keystone Jack, Category 5e, 8W, 568A/B

\*\* Color Options - 01 = Almond, 02 = White, 04 = Black, 05 = Ivory, 08 = Light Gray, RD = Red, BL = Blue, GR = Green, YL = Yellow, RG = Orange, PP = Purple. Standard stocked color - White. All colors may be subject to availability and variable pricing.

### Synergy Surface Mount Box

The PowerCat Synergy Surface Box is ideal for use in open office cabling. The 2, 4 and 6 port boxes are supplied unloaded and accept the DataGate Jack and Synergy Single Position Modules. The single port versions ship loaded with the DataGate Jack. Synergy Surface Boxes offer simple and organized installation in areas where surface mount is the only option. Cable can be installed from the sides or base of the box. Individual ports can also be color coded for site-specific network administration using connector icon labels.

- Stylish design
- Simple, organized cable entry and installation
- Screw fixing
- Clear and concise labeling
- DataGate Jack & Synergy Module compatible

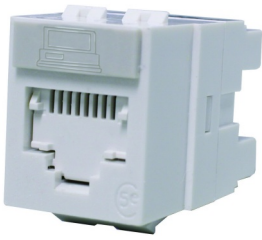


DataGate Jacks  
Page 14

Order No.	SAP No.	Description
SSY-00014-02	181340013	PowerCat 2 Port Synergy Surface Box, Unloaded - White
SSY-00015-02	181340016	PowerCat 4 Port Synergy Surface Box, Unloaded - White
SSY-00016-02	181340019	PowerCat 6 Port Synergy Surface Box, Unloaded - White
SBX-00009-02	182950000	PowerCat 6A 1 Port Synergy Surface Box RJ45 568A/B Shielded - White (loaded)
SBX-00005-02	181770326	PowerCat 6 1 Port Synergy Surface Box RJ45 UTP White (loaded)
SBX-00006-02	18338002	PowerCat 5e 1 Port Synergy Surface Box RJ45 UTP White (loaded)



## PowerCat 5e



DataGate Patch  
Panels  
Page 11

### PowerCat DataGate Jacks

The DataGate jack is designed to maintain clean secure connections. The RJ45 jack features a patented 'spring-loaded shutter' which protects it from dust and contaminants as well as providing tactile feedback. The spring-loaded shutter pops out an improperly seated patch cord, all with single-handed plug-in and removal. Available in eleven colors the DataGate jack utilize patented IDC V-shaped contacts that flex not fatigue when terminated and provides molded category identification on jack face as well as optional port identification icons.

- Integral 'spring-loaded' shutter that prevents incomplete mating
- IDC contacts that flex not fatigue when terminated
- Pointed IDC towers to speed termination and enhance cable retention
- 568A/B wiring configuration
- Allows rear and side entry cable termination
- Designed for use with Molex's Synergy, Streamline & USO II system of wallplates and surface blocks Compatible with Molex Unloaded DataGate Patch Panels

Order No.	SAP No.	Description
KSJ-00024.**	Consult Molex	PowerCat 5e DataGate Jack, 568A/B - Shuttered

\*\* Color Options - 01 = Almond, 02 = White, 04 = Black, 05 = Ivory, 08 = Light Gray, RD = Red, BL = Blue, GR = Green, YL = Yellow, RG = Orange, PP = Purple. Standard Stocked Colors - Black and White. All colors may be subject to availability and variable pricing.

## Wall Plates and Fascias



### Euromod Keystone Jack Fascia and Wall Plates Unloaded

The unloaded Euromod Keystone Fascia is specifically designed to accept the Molex Keystone Jack product range. The angled design reduces bend cord radius particularly in shallow floor box installations. The fascia is supplied with an integral spring loaded shutter for dust protection and a labeling window facility. The white Euromod Keystone Jack fascia is designed to fit into the white single gang (86 x 86mm) and double gang (86 x 145mm) wall plates, which are manufactured from the same color matched material

- Integral spring loaded shutter
- Protected labeling facility
- 25 x 50mm angled fascia
- Compatible with Keystone Jacks
- Matching single and double gang wall plates

Order No.	SAP No.	Description
MEU-00071-02	181770333	Euromod Keystone Jack Fascia Wall Plate, Single Gang 86 x 86mm - white
MEU-00072-02	181770334	Euromod Keystone Jack Fascia Wall Plate, Double Gang 86 x 1456mm - white
MEU-00073-02	181770332	Euromod Keystone Jack Fascia, 25 x 50mm, unloaded - white
17-0231-02	Consult Molex	Euromod Snap-in Adapter Collar (half) 50mm x 50mm
17-0232-02	Consult Molex	Euromod Snap-in Adapter Collar (full) 50mm x 50mm
42-311-02	181400006	Single Gang MOD-SNAP 1 Aperture - 86 x 86mm
42-312-02	181400005	Single Gang MOD-SNAP 2 Aperture - 86 x 86mm
42-314-02	181400008	Double Gang MOD-SNAP 4 Aperture - 86 x 146mm
17-0412-02	180060060	Euromod Quarter (12.5 x 50mm) Blank - White
17-0413-02	181370005	Euromod Half (25 x 50mm) Blank - White
17-0414-02	180060062	Euromod Full (50 x 50mm) Blank - White
MMS-00014-**	Consult Molex	MOD-SNAP Module Blank



### Keystone Jack Fascia 22.5 x 45mm Unloaded

The unloaded 22.5 x 45mm Keystone Fascia is specifically designed to accept the Molex Keystone Jack product range. The angled design reduces patch cord bend radius. The fascia is supplied with an integral spring loaded shutter for dust protection and a labeling window facility. The product is compatible with Legrand Mosaic wall plates (not supplied).

- Integral spring loaded shutter
- Protected labeling facility
- 22.5 x 45mm angled fascia
- Compatible with Legrand Mosaic wall plates
- Compatible with Keystone Jacks

Order No.	SAP No.	Description
MLG-00037-02	181770331	Keystone Jack Fascia, 22.5 x 45mm, unloaded - white



### MOD-SNAP Keystone Jack Fascia 38.5 x 25mm unloaded

The unloaded MOD-SNAP Keystone Fascia is specifically designed to accept the Molex Keystone Jack product range. The angled design reduces bend cord radius particularly in shallow floor box installations. The fascia is supplied with an integral spring loaded shutter for dust protection and a window labeling facility. The product is compatible with the MOD-SNAP wall plate range. Part numbers of compatible wall plates are shown below.

- Integral spring loaded shutter
- Protected labeling facility
- 38.5 x 25mm angled fascia
- Compatible with Keystone Jacks

Order No.	SAP No.	Description
MMS-00020-02	181770330	MOD-SNAP Keystone Jack Fascia, 38.5 x 25mm, unloaded - white



**4 Pair Termination Tool**

The Molex DataGate 4 Pair Termination Tool is a robust and reliable product that offers faultless gas-tight terminations of all four pairs simultaneously. The tool frame is manufactured from high grade steel with die-cast termination heads. Designed specifically for use with Molex DataGate and Keystone style jacks, the 4 Pair Termination Tool Frame is supplied unloaded into which either the UTP Termination Head (for termination of the UTP DataGate and Keystone jacks) or the C6A Termination Head (for termination of the C6A shielded DataGate jacks) is fitted. Operation is simple and efficient. The jack is placed over the wires that have been securely seated in the Termination Head. The Termination Head and jack are then pivoted into the cutting position and the handles depressed, resulting in wires that are firmly and accurately seated and neatly trimmed, in one simple operation.

- Designed specifically for the DataGate, Keystone and C6A Shielded Jacks
- Simple to operate
- Cables are terminated and neatly trimmed in one operation
- Tool Frame supplied unloaded. UTP and C6A Termination Heads supplied separately
- MOD-Clip 4 Pair Termination Tool is compatible with UTP MOD-Clip C6 Jacks only. C6A MOD-Clip jacks are terminated using the DataGate tool

Order No.	SAP No.	Description
31.0011	Consult Molex	4 Pair Termination Tool Frame
31.0010	Consult Molex	4 Pair Termination Tool Frame, UTP - MOD-Clip Jack only
31.0012	Consult Molex	Termination Head UTP
31.0015	182520015	Termination Head C6A



**Keystone Jack C6A UTP 4 Pair Termination Tool**

The Keystone Jack C6A UTP 4 Pair Termination Tool designed specifically for compatibility with the the Gen II C6A UTP jack. The tool is a robust, reliable product offering fast, fault-less gas-tight termination of all four pairs of solid cable simultaneously. The C6A UTP Keystone Jack Gen II Termination tool is supplied with a cutting blade module installed and a spare replacement blade module.

- Fast, fault-less termination
- Cutting blade and spare supplied with each tool for long termination life
- Ergonomic tool handle design for comfortable repeat operation

Order No.	SAP No.	Description
31.0016	182520017	Keystone Jack C6A UTP 4 Pair Termination Tool



**Termination Tools and Terminating Puck**

The IDC Punchdown Tool provides reliable terminations and is compatible with 110 Style. The Punch-Down Terminating Puck is a handy twisted pair termination aid that works with Molex RJ45 DataGate jacks.

- Low-impact termination force
- Scissor style cut off
- Wire cutting immobilizer switch
- Light-weight impact resistant handle
- Universal IDC compatibility

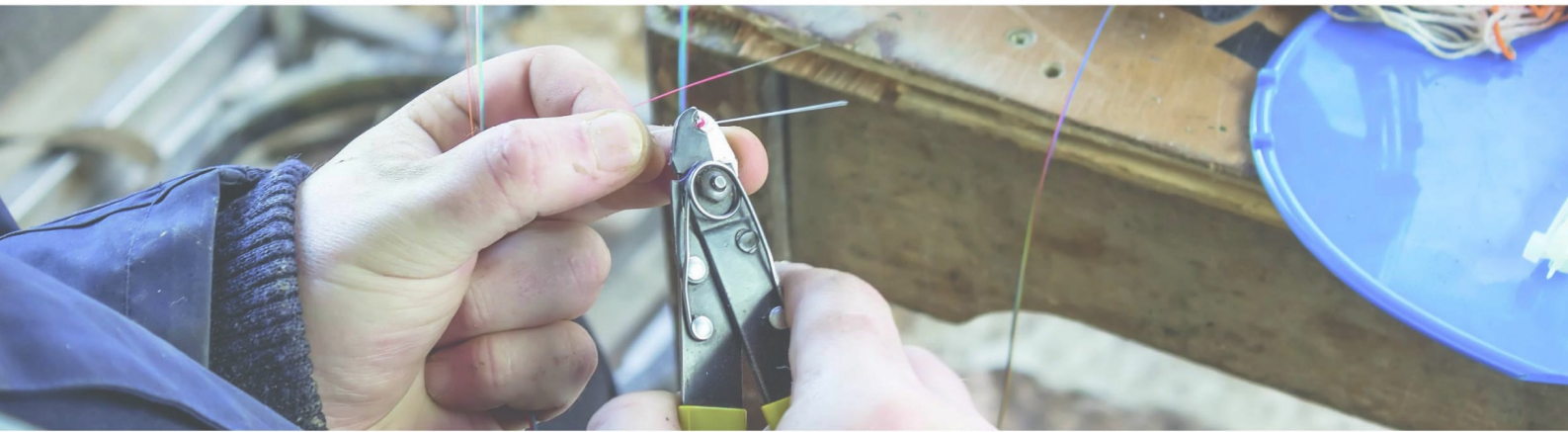
Order No.	SAP No.	Description
KPD-00087	181980070	Category 6 110 Style Multi-Pair Termination Tool with Head and Handle
CSP-00018-04	180400053	Punchdown Terminating Puck (Black)

# Order No. Reference

Order No.	SAP No.	Description	Page
16.A0012	180070055	22.5 x 45mm Blank Module - White	13
17-0231-02	Consult Molex	Euromod Snap-in Adapter Collar (half) 50mm x 50mm	18
17-0232-02	Consult Molex	Euromod Snap-in Adapter Collar (full) 50mm x 50mm	18
17-0412-02	180060060	Euromod Quarter (12.5 x 50mm) Blank - White	12, 18
17-0413-02	181370005	Euromod Half (25 x 50mm) Blank - White	12, 18
17-0414-02	180060062	Euromod Full (50 x 50mm) Blank - White	12, 18
31.0010	Consult Molex	4 Pair Termination Tool Frame, UTP - MOD-Clip Jack only	19
31.0011	Consult Molex	4 Pair Termination Tool Frame	19
31.0012	Consult Molex	Termination Head UTP	19
31.0015	182520015	Termination Head C6A	19
31.0016	182520017	Keystone Jack C6A UTP 4 Pair Termination Tool	19
39-504-5E	181700098	PowerCat U/UTP C5e LS0H Cable, Dca-s2,d2,a1 - 305m Reel - Violet	15
42-311-02	181400006	Single Gang MOD-SNAP 1 Aperture - 86 x 86mm	18
42-312-02	181400005	Single Gang MOD-SNAP 2 Aperture - 86 x 86mm	18
42-314-02	181400008	Double Gang MOD-SNAP 4 Aperture - 86 x 146mm	18
CAA-00277-0C	181740156	PowerCat 6 U/UTP Cable PVC (per meter) - Red	10
CAA-00277-0E	181740152	PowerCat 6 U/UTP Cable PVC (per meter) - Gray	10
CAA-00277-0H	181740151	PowerCat 6 U/UTP Cable PVC (per meter) - Blue	10
CAA-00277-0J	181740153	PowerCat 6 U/UTP Cable PVC (per meter) - Green	10
CAA-00277-0K	181740154	PowerCat 6 U/UTP Cable PVC - per meter - Yellow	10
CAA-00277-0N	181740155	PowerCat 6 U/UTP Cable PVC (per meter) - Orange	10
CAA-00277-0W	181740191	PowerCat 6 U/UTP Cable PVC (per meter) - White	10
CAA-00277-BK	181740157	PowerCat 6 U/UTP Cable PVC (per meter) - Black	10
CAA-00277-VL	181740192	PowerCat 6 U/UTP Cable PVC (per meter) - Violet	10
CAA-00358	183530002	Category 7 S/FTP LS0H Cable Dca-s1a,d1,a1 Violet - 1000m	3
CAA-00360	Consult Molex	Category 7A S/FTP Cable, 4 Pairs 1.2GHz LS0H, Dca-s1a,d1,a1 Violet - 500m reel	3
CAA-00375-0C	181700142	PowerCat U/UTP C5e PVC -500m Reel - Red	15
CAA-00375-0E	181700138	PowerCat U/UTP C5e PVC -500m Reel - Gray	15
CAA-00375-0H	181700137	PowerCat U/UTP C5e PVC - 500m Reel - Blue	15
CAA-00375-0J	181700139	PowerCat U/UTP C5e PVC -500m Reel - Green	15
CAA-00375-0K	181700140	PowerCat U/UTP C5e PVC -500m Reel - Yellow	15
CAA-00375-0N	181700141	PowerCat U/UTP C5e PVC -500m Reel - Orange	15
CAA-00375-BK	181700143	PowerCat U/UTP C5e PVC -500m Reel - Black	15
CAA-00403-0E	Consult Molex	PowerCat 5e F/UTP PVC Cable - 500m reel	15
CAA-00413-VL	183020040	PowerCat 6A U/FTP LS0H Cable B2ca-s1a,d1,a1 Violet 500m	3
CAA-00418	183020048	Cat6A U/FTP Gel Filled Outdoor PE Cable Nylon Fca Blue 305m	3
CAA-00419-0H	181740138	Cat6 U/UTP Gel Filled Outdoor PE Cable Nylon Fca Blue 305 m	10
CAA-00427-0E	181700153	PowerCat U/UTP C5e LS0H - 305m Box - Gray	15
CAA-00427-0N	181700157	PowerCat U/UTP C5e LS0H -500m Reel - Orange	15
CAA-00427-BK	181700158	PowerCat U/UTP C5e LS0H -500m Reel - Black	15
CAA-00427-BL	181700154	PowerCat U/UTP C5e LS0H -500m Reel - Blue	15
CAA-00427-GR	181700155	PowerCat U/UTP C5e LS0H -500m Reel - Green	15
CAA-00427-RD	181700152	PowerCat U/UTP C5e LS0H - 305m Box - Red	15
CAA-00427-YL	181700156	PowerCat U/UTP C5e LS0H - 500m Reel - Yellow	15
CAA-00428-0E	181710025	PowerCat U/UTP C5e -500m Reel - Gray	15
CAA-00429-0E	181740163	PowerCat 6 U/UTP LS0H - 305m Box - Gray	10
CAA-00429-0N	181740166	PowerCat 6 U/UTP LS0H - 500m Reel - Orange	10
CAA-00429-BK	181740168	PowerCat 6 U/UTP LS0H - 500m Reel - Black	10
CAA-00429-BL	181740162	PowerCat 6 U/UTP LS0H - 305m Box - Blue	10
CAA-00429-GR	181740164	PowerCat 6 U/UTP LS0H - 500m Reel - Green	10
CAA-00429-RD	181740167	PowerCat 6 U/UTP LS0H - 500m Reel - Red	10
CAA-00429-YL	181740165	PowerCat 6 U/UTP LS0H - 500m Reel - Yellow	10
CAA-00430-0E	181750041	PowerCat 6 U/UTP LS0H - 500m Reel - Gray	10
CAA-00445-BL	181000034	PowerCat 6A UTP LS0H Cable 500m reel, Blue	8
CAA-00445-GR	181000035	PowerCat 6A UTP LS0H Cable 500m reel, Green	8
CAA-0322L-VI	183020033	PowerCat 6A U/FTP LS0H Cable, Dca-s1,d2,a1, Violet - 500m	3
CSP-00018-04	180400053	Punchdown Terminating Puck (Black)	19
CSP-00021-**	Consult Molex	Blank Connector Icon Labels 6-Pack (Bag of 10)	5, 11, 15
CSP-00022-**	Consult Molex	Data Connector Icon Labels 6-Pack (Bag of 10)	11, 15
CSP-00023-**	Consult Molex	Voice Connector Icon Labels 6-Pack (Bag of 10)	11, 15
KPD-00078	181980088	96 Pair Base Without Legs (24 Category 6 4 Pair IDC Connectors) C6	13
KPD-00079	181980068	96 Pair Base With Legs (24 Category 6 4 Pair IDC Connectors) C6	13
KPD-00087	181980070	Category 6 110 Style Multi-Pair Termination Tool with Head and Handle	19
KPD-00089	181980072	96 Pair Base Without Legs (No Connectors) C6	13
KPD-00090	181980073	96 Pair Base With Legs (No Connectors) C6	13
KSJ-00005-0*	Consult Molex	Single Position Blank Module (Bag of 25)	11
KSJ-00018-**	Consult Molex	PowerCat 6 DataGate Jack, 568A/B	14
KSJ-00024-**	Consult Molex	PowerCat 5e DataGate Jack, 568A/B - Shuttered	17
KSJ-00032-**	Consult Molex	Keystone Jack, Category 5e, 8W, 568A/B	16
KSJ-00033-**	Consult Molex	Keystone Jack, Category 6, 8W, 568A/B	12
KSJ-00064-**	Consult Molex	Keystone Blank	9, 11, 16
KSJ-00096-**	Consult Molex	PowerCat 6A DataGate Shielded Straight and Side Entry Jack	7
KSJ-00099-02	1810020009	Keystone Jack C6A UTP 568A/B Gen II - White	8
KSJ-00099-04	1810020010	Keystone Jack C6A UTP 568A/B Gen II - Black	8
KSJ-00099-05	1810020011	Keystone Jack C6A UTP 568A/B Gen II - Ivory	8
KSJ-00099-08	1810020012	Keystone Jack C6A UTP 568A/B Gen II - Gray	8
KSJ-00099-BL	1810020013	Keystone Jack C6A UTP 568A/B Gen II - Blue	8
KSJ-00099-RD	1810020014	Keystone Jack C6A UTP 568A/B Gen II - Red	8
KSJ-00099-YL	1810020015	Keystone Jack C6A UTP 568A/B Gen II - Yellow	8
KSP-00001	183010086	Category 6A Field Termination Plug	5
KSP-00002	180190012	Category 6A Field Termination Plug, STP, Right Angle	5
KSP-00003	Consult Molex	Category 6 UTP Field Termination Plug	12
MEU-00056-02	181730016	PowerCat 6 Euromod II Module RJ45 568A/B UTP - White	12
MEU-00056-04	181730017	PowerCat 6 Euromod II Module RJ45 568A/B UTP - Black	12
MEU-00065-02	183010005	PowerCat 6A Angled Euromod II RJ45 Module, 568A/B - White	6
MEU-00065-04	183010012	PowerCat 6A Angled Euromod II RJ45 Module, 568A/B - Black	6
MEU-00071-02	181770333	Euromod Keystone Jack Fascia Wall Plate, Single Gang 86 x 96mm - white	18
MEU-00072-02	181770334	Euromod Keystone Jack Fascia Wall Plate, Double Gang 86 x 1456mm - white	18
MEU-00073-02	181770332	Euromod Keystone Jack Fascia, 25 x 50mm, unloaded - white	18

# Order No. Reference

Order No.	SAP No.	Description	Page
MLG-00021-02	188000016	PowerCat 6 22.5 x 45mm Legrand Compatible Module RJ45 568A/B UTP - White	13
MLG-00024-02	188000068	PowerCat 6 45 x 45mm Legrand Compatible Module RJ45 568A/B UTP - White	13
MLG-00030-**	183010006	PowerCat 6A 22.5 x 45mm Legrand compatible Module	6
MLG-00031-**	183010007	PowerCat 6A 45 x 45mm Legrand compatible Module	6
MLG-00037-02	181770331	Keystone Jack Fascia, 22.5 x 45mm, unloaded - white	18
MMC-00010-**	Consult Molex	PowerCat 6 MOD-Clip DataGate Jack, 568A/B	12
MMC-00017-02	183010020	PowerCat 6A MOD-Clip Shielded Jack 8W 568 A/B White	6
MMC-00017-04	183010019	PowerCat 6A MOD-Clip Shielded Jack 8W 568 A/B Black	6
MMS-00013-**	Consult Molex	PowerCat 6 Angled MOD-SNAP III Module RJ45 568A/B UTP	13
MMS-00014-**	Consult Molex	MOD-SNAP Module Blank	13, 18
MMS-00017-02	183010040	PowerCat 6A Angled MOD-SNAP III RJ45 Module, 568A/B - White	6
MMS-00017-04	183010011	PowerCat 6A Angled MOD-SNAP III RJ45 Module, 568A/B - Black	6
MMS-00020-02	181770330	MOD-SNAP Keystone Jack fascia, 38.5 x 25mm, unloaded - white	18
PCD-01000-**	Consult Molex	PowerCat 5e Patch Cord U/UTP, LS0H - 0.5m	15
PCD-01001-**	Consult Molex	PowerCat 5e Patch Cord U/UTP, LS0H - 1m	15
PCD-01002-**	Consult Molex	PowerCat 5e Patch Cord U/UTP, LS0H - 1.5m	15
PCD-01003-**	Consult Molex	PowerCat 5e Patch Cord U/UTP, LS0H - 2m	15
PCD-01005-**	Consult Molex	PowerCat 5e Patch Cord U/UTP, LS0H - 3m	15
PCD-01009-**	Consult Molex	PowerCat 5e Patch Cord U/UTP, LS0H - 5m	15
PCD-01013-**	Consult Molex	PowerCat 5e Patch Cord U/UTP, LS0H - 7m	15
PCD-01019-**	Consult Molex	PowerCat 5e Patch Cord U/UTP, LS0H - 10m	15
PCD-02000-**	Consult Molex	PowerCat 6 Patch Cord U/UTP, LS0H - 0.5m	10
PCD-02001-**	Consult Molex	PowerCat 6 Patch Cord U/UTP, LS0H - 1m	10
PCD-02002-**	Consult Molex	PowerCat 6 Patch Cord U/UTP, LS0H - 1.5m	10
PCD-02003-**	Consult Molex	PowerCat 6 Patch Cord U/UTP, LS0H - 2m	10
PCD-02005-**	Consult Molex	PowerCat 6 Patch Cord U/UTP, LS0H - 3m	10
PCD-02009-**	Consult Molex	PowerCat 6 Patch Cord U/UTP, LS0H - 5m	10
PCD-02013-**	Consult Molex	PowerCat 6 Patch Cord U/UTP, LS0H - 7m	10
PCD-02019-**	Consult Molex	PowerCat 6 Patch Cord U/UTP, LS0H - 10m	10
PCD-07000-**	Consult Molex	PowerCat 6A Shielded Patch Cord 568A/B, LS0H - 1m	4
PCD-07001-**	Consult Molex	PowerCat 6A Shielded Patch Cord 568A/B, LS0H - 2m	4
PCD-07002-**	Consult Molex	PowerCat 6A Shielded Patch Cord 568A/B, LS0H - 3m	4
PCD-07004-**	Consult Molex	PowerCat 6A Shielded Patch Cord 568A/B, LS0H - 5m	4
PCD-07006-**	Consult Molex	PowerCat 6A Shielded Patch Cord 568A/B, LS0H - 7m	4
PCD-07009-**	Consult Molex	PowerCat 6A Shielded Patch Cord 568A/B, LS0H - 10m	4
PCD-07054-VL	183160844	PowerCat 6A Shielded Solid Cable Assembly, U/FTP, LS0H, Violet, 4m	4
PCD-07055-VL	183160845	PowerCat 6A Shielded Solid Cable Assembly, U/FTP, LS0H, Violet, 6m	4
PCD-07056-VL	183160846	PowerCat 6A Shielded Solid Cable Assembly, U/FTP, LS0H, Violet, 8m	4
PCD-07057-VL	183160847	PowerCat 6A Shielded Solid Cable Assembly, LS0H, U/FTP, Violet, 10m	4
PCD-07058-VL	183160848	PowerCat 6A Shielded Solid Cable Assembly, LS0H, U/FTP, Violet, 20m	4
PCD-07059-VL	183160849	PowerCat 6A Shielded Solid Cable Assembly, LS0H, U/FTP, Violet, 30m	4
PCD-07060-VL	183160850	PowerCat 6A Shielded Solid Cable Assembly, LS0H, U/FTP, Violet, 40m	4
PCD-07061-**	Consult Molex	PowerCat Shielded Patch Cord 568A/B, LS0H - 1.5m	4
PCD-07064-**	Consult Molex	PowerCat 6A Shielded Patch Cord 568A/B, LS0H - 0.5m	4
PCD-07068-**	Consult Molex	PowerCat 6A Shielded Patch Cord 568A/B, LS0H - 0.25m	4
PCD-08000-0P	183270077	PowerCat 6A Shielded Solid Cable Assembly, LS0H, U/FTP, Violet, 15m	4
PCD-08001-0P	183270078	PowerCat 6A Shielded Solid Cable Assembly, LS0H, U/FTP, Violet, 25m	4
PCD-08002-0P	183270079	PowerCat 6A Shielded Solid Cable Assembly, LS0H, U/FTP, Violet, 35m	4
PCD-08003-0P	183270080	PowerCat 6A Shielded Solid Cable Assembly, LS0H, U/FTP, Violet, 50m	4
PCD-08004-0P	183270081	PowerCat 6A Shielded Solid Cable Assembly, LS0H, U/FTP, Violet, 60m	4
PCD-09101-**	Consult Molex	PowerCat 6A UTP Patch Cord LS0H 1m	8
PCD-09102-**	Consult Molex	PowerCat 6A UTP Patch Cord LS0H 2m	8
PCD-09103-**	Consult Molex	PowerCat 6A UTP Patch Cord LS0H 3m	8
PCD-09105-**	Consult Molex	PowerCat 6A UTP Patch Cord LS0H 5m	8
PCD-09107-**	Consult Molex	PowerCat 6A UTP Patch Cord LS0H 7m	8
PCD-09110-**	Consult Molex	PowerCat 6A UTP Patch Cord LS0H 10m	8
PCD-70301-0*	Consult Molex	PowerCat 6A Slim 28 AWG Shielded Patch Cord LS0H 1m	5
PCD-70302-0*	Consult Molex	PowerCat 6A Slim 28 AWG Shielded Patch Cord LS0H 2m	5
PCD-70303-0*	Consult Molex	PowerCat 6A Slim 28 AWG Shielded Patch Cord LS0H 3m	5
PCD-70305-0*	Consult Molex	PowerCat 6A Slim 28 AWG Shielded Patch Cord LS0H 5m	5
PCD-70307-0*	Consult Molex	PowerCat 6A Slim 28 AWG Shielded Patch Cord LS0H 7m	5
PCD-7030A-0*	Consult Molex	PowerCat 6A Slim 28 AWG Shielded Patch Cord LS0H 0.5m	5
PCD-7030B-0*	Consult Molex	PowerCat 6A Slim 28 AWG Shielded Patch Cord LS0H 1.5m	5
PCD-7030C-0*	Consult Molex	PowerCat 6A Slim 28 AWG Shielded Patch Cord LS0H 2.5m	5
PCD-70310-0*	Consult Molex	PowerCat 6A Slim 28 AWG Shielded Patch Cord LS0H 10m	5
PID-00141	182090009	PowerCat 6 24 Port Patch Panel RJ45 568A/B UTP C6 - 1U - Graphite	11
PID-00142	182040010	PowerCat 6 48 Port Patch Panel RJ45 568A/B UTP C6 - 2U - Graphite	11
PID-00174	182080372	PowerCat 5e 24 Port DataGate Patch Panel RJ45 568A/B UTP - 1U	15
PID-00175	182080374	PowerCat 5e 48 Port DataGate Patch Panel RJ45 568A/B UTP - 2U	15
PID-00217	182960000	PowerCat 6A 24 Port Patch Panel 568A/B Shielded - 1U	5
PID-00218	182960001	PowerCat 6A 24 Port Angled Patch Panel 568A/B Shielded - 1U	5
PID-00219	182960002	PowerCat 6A 48 Port Patch Panel 568A/B Shielded - 2U	5
PID-00220	182960003	PowerCat 6A 48 Port Angled Patch Panel 568A/B Shielded - 2U	5
PID-00257	182960014	24 Port Keystone Jack Patch Panel 1U Unloaded - Metric fixing kit	9, 11, 16
PID-00258	180810031	PowerCat 24 Port DataGate Flat Patch Panel, Unloaded UTP or Shielded - 1U - Black	11
PID-00259	180810032	PowerCat 24 Port DataGate Angled Patch Panel, Unloaded UTP or Shielded - 1U - Black	11
PID-00260	180810033	PowerCat 48 Port DataGate Flat Patch Panel, Unloaded UTP or Shielded - 2U - Black	11
PID-00261	180810034	PowerCat 48 Port DataGate Angled Patch Panel, Unloaded UTP or Shielded - 2U - Black	11
PID-00289	182960027	48 Port Keystone Jack Patch Panel 2U Unloaded - Metric fixing kit	9, 11, 16
SBX-00005-02	181770326	PowerCat 6 1 Port Synergy Surface Box RJ45 UTP White (loaded)	7, 14, 16
SBX-00006-02	18338002	PowerCat 5e 1 Port Synergy Surface Box RJ45 UTP White (loaded)	7, 14, 16
SBX-00009-02	182950000	PowerCat 6A 1 Port Synergy Surface Box RJ45 568A/B Shielded - White (loaded)	7, 14, 16
SSY-00014-02	181340013	PowerCat 2 Port Synergy Surface Box, Unloaded - White	7, 14, 16
SSY-00015-02	181340016	PowerCat 4 Port Synergy Surface Box, Unloaded - White	7, 14, 16
SSY-00016-02	181340019	PowerCat 6 Port Synergy Surface Box, Unloaded - White	7, 14, 16



# Customer Support Portal

## *Connecting Users*

### Warranty and testing requirements

Only Molex Certified Installers can register a deployment for the Molex 25-Year System Performance and Application Assurance Warranty.

Registration and Training is available online:

**<https://csp.molex.com>**

- Entire channel of components to consist of the Molex Connected Enterprise solution end-end.
- Permanent Link to be tested with an approved, calibrated certification analyser.
- Submit correct information as required by Molex to the Customer Support Portal for approval.
- Online support: **[ces.support@molex.com](mailto:ces.support@molex.com)**

**The Customer Support Portal is your go-to hub for all the tools and technical information you need.**

- Training Courses
- Consultant Tools
- Consultant Proposal Generator
- Cable Fill Rate Estimator
- BoM Estimator
- Multi-Site Overview Survey tool
- Warranty Checklist
- Molex PoE Calculator
- Authorised Molex Distributors
- Technical Bulletins
- System Performance warranty
- Testing Procedures

Visit: **<https://csp.molex.com>**

Melbourne, Australia  
Tel: +61 3 9971 7111

Shanghai, China  
Tel: +86 215 048 0889

Bangalore, India  
Tel: +91 80 6683 8412

Tczew, Poland  
Tel: +48 58 530 62 00

Johannesburg, South Africa  
Tel: +27 108 232 208

Portsmouth, UK  
Tel: +44 2392 205800

Dubai, UAE  
Tel: +971 564036976

Lisle, IL USA  
Tel: +1 866 733 6659

[www.molexc.es.com](http://www.molexc.es.com)

**molex**

Molex is a registered trademark of Molex, LLC in the United States of America and may be registered in other countries; all other trademarks listed herein belong to their respective owners. All information is correct at the time of publication, specifications are subject to change.

UK/0k/SK

©2022 Molex