

A man in a blue shirt and glasses is standing in a server room, looking at a laptop. The room is filled with server racks, and the lighting is dim with some blue and green lights from the equipment.

# SCALABLE ENTERPRISE SOLUTIONS FOR DATA CENTER CABLING >

Molex Connected Enterprise Solutions

**molex**

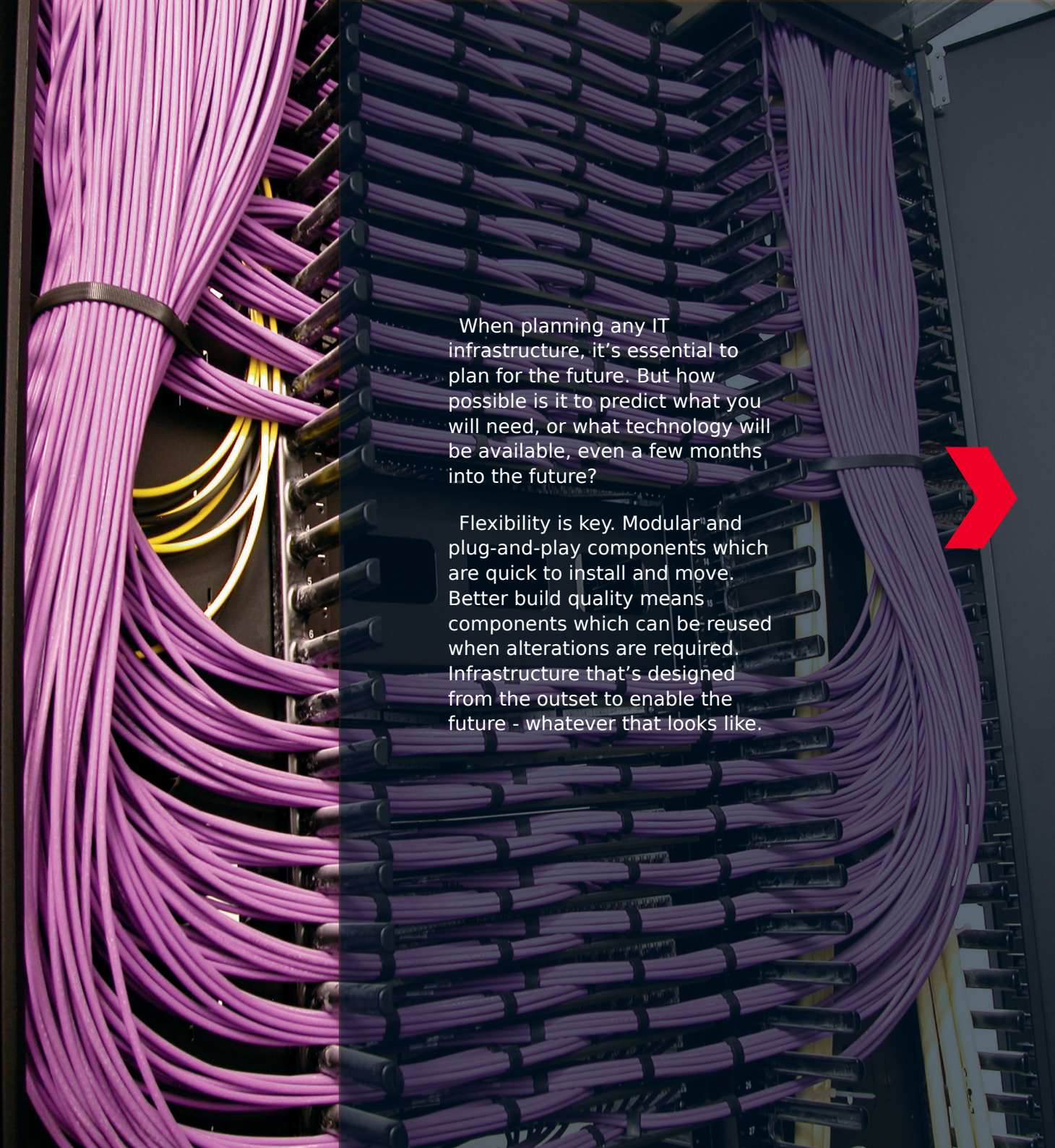


## TAILORING YOUR DATA CENTER STRATEGY >

Our digital world is becoming ever more connected. We use more devices, run increasingly complicated applications, store more information for longer. For organizations to thrive, they must plan for managing both change and resource.

Data center strategy is a core aspect of any IT plan. Data sovereignty, rising numbers of connected devices and our increasing dependence on technology are key issues. Availability and fast access are basic requirements, but with reliable security and controlled costs.

Enterprise, cloud and colocation services all have their own benefits. Increasing numbers of organizations are implementing hybrid solutions that combine the best of each. In order to develop a solution that meets their unique needs, organizations need to first develop an in-depth understanding of their own requirements.



When planning any IT infrastructure, it's essential to plan for the future. But how possible is it to predict what you will need, or what technology will be available, even a few months into the future?

Flexibility is key. Modular and plug-and-play components which are quick to install and move. Better build quality means components which can be reused when alterations are required. Infrastructure that's designed from the outset to enable the future - whatever that looks like.

## CONNECTED ENTERPRISE SOLUTIONS

Molex has been developing connectivity solutions for over 50 years. As one of the pioneers of structured cabling, we have provided solutions to some of the largest organizations around the world.

Trusted by hundreds of organizations worldwide, our range of end-to-end infrastructure products deliver robust, high quality connectivity across your enterprise, delivering fast transmission from the data center to the desk.

**molex**



## WHY MOLEX?

Molex has been developing connectivity solutions for over 50 years. As one of the pioneers of structured cabling, we have provided solutions to some of the largest organizations around the world.



## END-TO-END SOLUTIONS

Trusted by hundreds of organizations worldwide, our range of end-to-end infrastructure products deliver robust, high quality connectivity across your enterprise, delivering fast transmission from the data center to the desk.

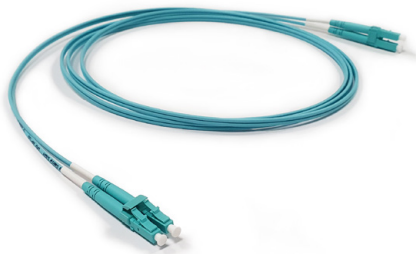


## GLOBAL REACH

With design and manufacturing facilities and sales teams around the world, we are able to draw on global market intelligence to develop products to meet the needs of tomorrow, today.

**molex**

# OUR PRODUCTS CABLING SOLUTIONS



## Optical Fiber Solution

The Lightband fiber optic solution offers the highest level of speed, bandwidth and security performance, and is ideally suited for deployment in data centers.

Cable is supplied ready to install, minimizing on site installation time. For highly sensitive applications, locking patch cords prevent unauthorized changes. Supports latest data transmission rates up to 400Gbps.



## PowerCat 6A Solution

Molex PowerCat 6A is a high performance Category 6A solution that provides superior performance where speed, reliability, or future proofing is required. With exceptional alien crosstalk suppression, insertion loss and EMI immunity characteristics, it is the system of choice for data centers.

Supports 10GBASE-T performance<sup>+</sup>



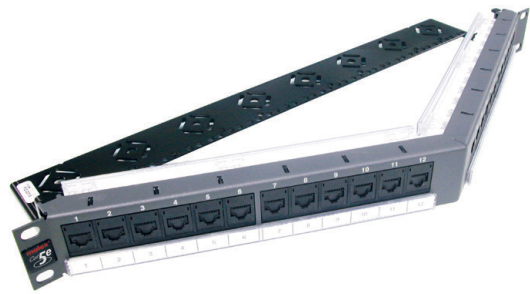
## ModLink Plug & Play

The ModLink solution is ideal for mission critical applications where fast installation is required and moves / adds / changes (MACS) are frequent. Self-contained, factory assembled cassettes convert an MTP interface to a choice of other type of connectors.

Cassettes are low loss ready, ideal for up to 400G Ethernet. This solution is modular, flexible and easily configurable.

<sup>+</sup> when installed as a complete 6A solution

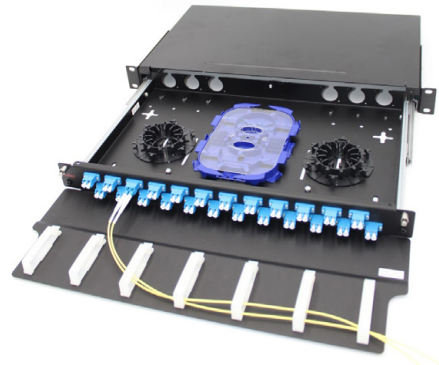
# OUR PRODUCTS CABLING SOLUTIONS



## Angled Patch Panel

Ideal for high density installations or those which utilize extensive side and end-of-the-rack cable management. The angled feature provides enhanced port access and ensures safe patch cord bend radius.

Constructed of cold-rolled steel for strength and long-term durability.



## Multifunction Fiber Enclosure

A comprehensive range of rack mount multifunction enclosures for secure management of fibers. These high-quality enclosures are designed to flexibly accommodate high fiber counts in various termination types and adapter configurations.

Compatible with Molex DataGate RJ45 jack adapter plates for multimedia applications.



## Xtreme Density System

The Xtreme Density System is a flexible, extremely high density solution where high performance and quick installation is required.

Durable powder / liquid coated steel construction ensures years of reliable service. Designed for 10G / 25G / 40G / 50G / 100G system migration, 400G-ready.

**molex**

# CASE STUDY: ORDOS BIG DATA CENTER

Ordos has become one of the most desirable locations in China for building data centres.

With a construction area of 40,000 square meters, this was one of the key projects in Ordos city government's "Smart City" strategic plan.

Mr Wang, project manager at construction and operation contractor, Rockcontrol, commented:

*"We chose Molex for three reasons:*

*"Firstly, Molex products' performance and quality met the project's harsh environmental requirements;*

*"Secondly, Molex's capacity and logistic service could meet our tight delivery requirement;*

*"and finally, Molex's professional employees could help us navigate all the difficulties in the project."*

*"After the project was started, Molex also provided enormous help so that we were able to replace the existing underperforming system in less than three months. We kept moving up the structured cabling products' delivery schedule and each time, Molex worked hard to fulfil our requirement; meanwhile, all the pre-terminated fiber cables were packed by rows following the cabinet configurations, which was very convenient for our installation and saved a lot time."*

*"The successful operation of Ordos Big Data Centre proved that it was absolutely the correct choice to use Molex products."*

**molex**

CONNECTED ENTERPRISE SOLUTIONS

# DRIVING BUSINESS CONNECTIVITY

## Quality, Reliability, Integrity

Molex has been developing high performance connectivity solutions for over 50 years. A leader in opto-electronic technologies, we are uniquely positioned to understand the physical requirements of high performance cabling and supply to many major OEMs.

We are known for the quality and reliability of our products and our integrity as a company. With exceptional build quality, our products are built to be used and reused.

## 25-Year Warranty

We work with hand-selected, Molex-trained installers and consultants around the world to ensure you receive the highest quality of service end to end. When installed by Molex Certified Installers, our products are covered by a 25-year warranty. In addition, we have technical support teams around the world to support you throughout the life of the installation.

## Customers Include:

Pardubice Region Police, Czechia  
Nanjing Children's Hospital, China  
Aeroflot Russian Airlines, Russia  
Odisha Power Transmission Corp, India  
People's Bank of China Shenyang, China  
Discovery Health, South Africa  
Department of Emergency Services, Australia  
Mid America Bank, USA  
HKMA, Hong Kong  
Dubai International Airport, UAE  
Vivo China, China

**molex**





# molex

Connected Enterprise Solutions

For data center solutions contact your  
local sales team:

[www.molexces.com/contact-us](http://www.molexces.com/contact-us)

[molexces.com](http://molexces.com)

Molex is a registered trademark of Molex, LLC in the United States of America and may be registered in other countries; all other trademarks listed herein belong to their respective owners. This information is correct at the date of publication, specifications are subject to change.