






 <p>2x</p>	 <p>2x</p>	 <p>1x</p>	 <p>2x</p>
 <p>2x</p>	 <p>8xM8 (A)</p>	 <p>8xM6 (B)</p>	 <p>2(+2)xM6 (C)</p>

MOLEX PREMISE NETWORKS

Corporate Headquarters
Tel. +1 603-324-0200
www.molexpn.com

Western Europe Headquarters
Tel. +44 (0) 1489 572 111
www.molexpn.co.uk

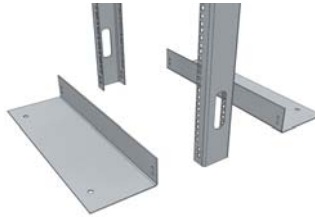
Eastern Europe Headquarters
Tel. + 48 22 326 07 20
www.molexpn.com.pl

Pac-Rim Headquarters
Tel. + 61 3 9971 7111
www.molexpn.com.au

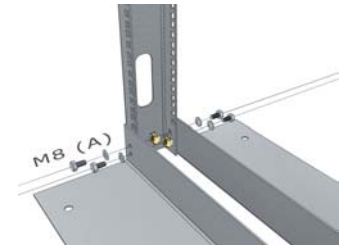
1.



2.



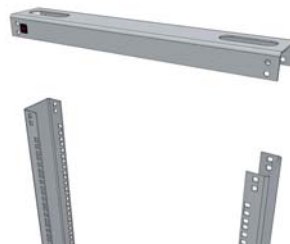
3.



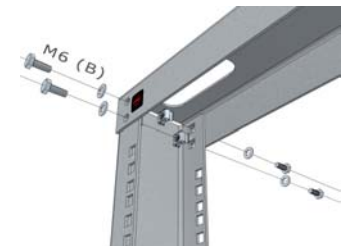
4.



5.



6.



7.



8.



9.



MOLEX PREMISE NETWORKS

Corporate Headquarters

Tel. +1 603-324-0200
www.molexpn.com

Western Europe Headquarters

Tel. +44 (0) 1489 572 111
www.molexpn.co.uk

Eastern Europe Headquarters

Tel. + 48 22 326 07 20
www.molexpn.com.pl

Pac-Rim Headquarters

Tel. + 61 3 9971 7111
www.molexpn.com.au